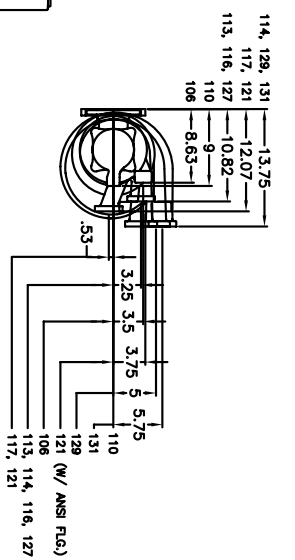
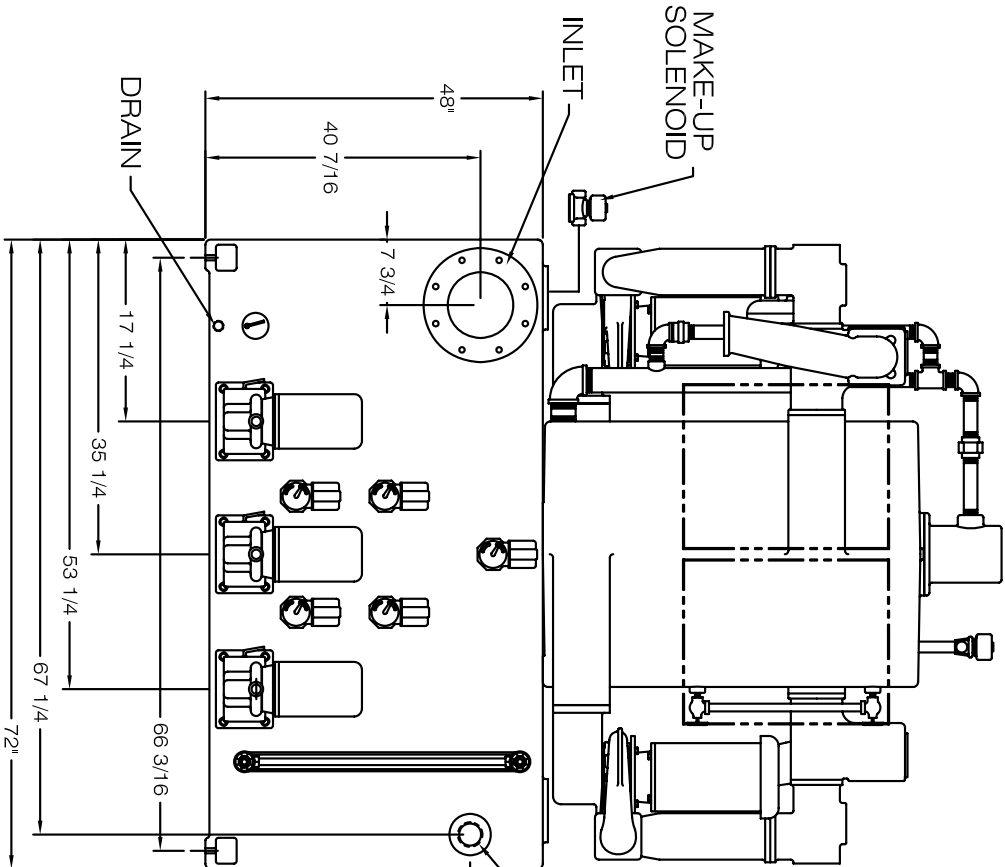


INLET - 8" 150# FLANGE  
 OVERFLOW - 3" N.P.T.  
 VENT - 3" N.P.T.  
 DRAIN - 1" N.P.T.



**RECOMMENDED DISCHARGE NOZZLE SIZE CAPACITY CHART**

0-15	3/4"
16-60	1" OR 1 1/2"
61-113	2"
114-150	2 1/2"
151-250	3"
251-400	4"

**BUTTERFLY VALVE THICKNESS**

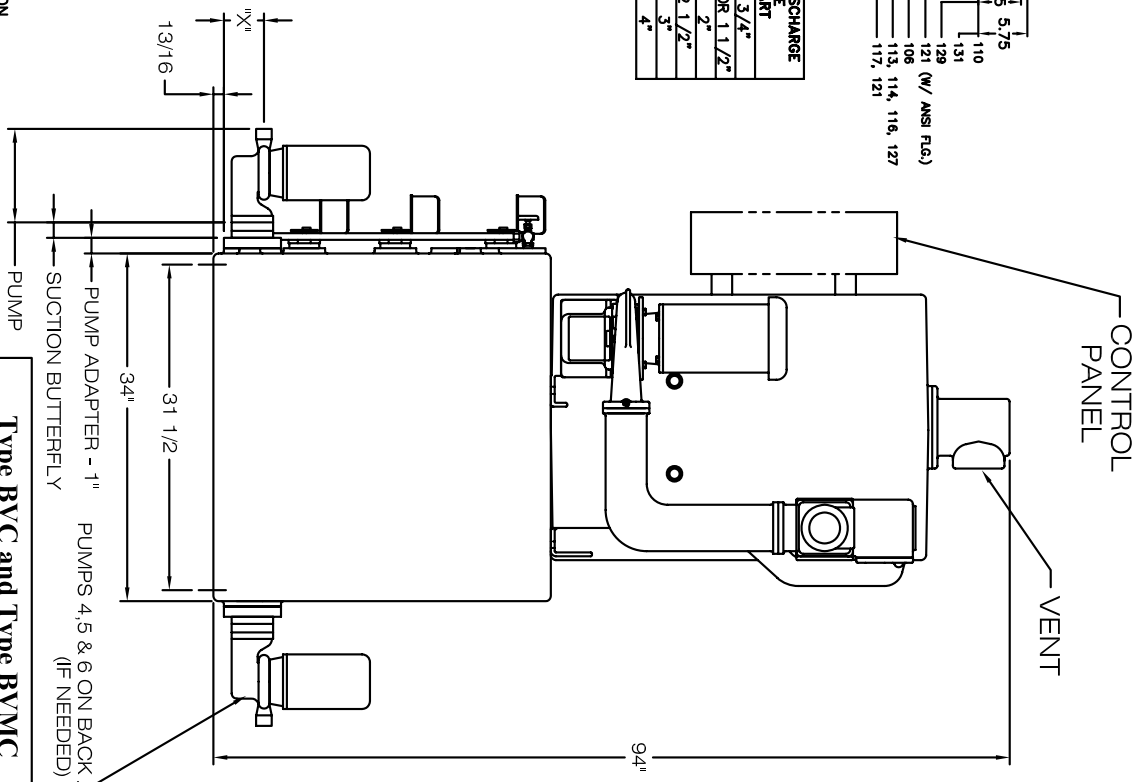
3" VALVE	1 1/2"
4" VALVE	2"

4" BUTTERFLY VALVE ONLY USED ON 114 & 129 150 GPM PLUS AND 131 PUMPS

1 1/2" DIMENSION

**PUMP MODELS**

110	106	113, 116 & 127	117 & 121	114 & 129	114 & 129	131
3.13	3.31	4.19	3.82	4.50	6.32	7.00



**Type BVC and Type BYMC Vacuum Receiver - 19 to 52 CFM With 500 Gallon Condensate or Boiler Feed Receiver**

DRAWN BY	DATE	REVISION
J. BROOKENS	7/09	.5
DIMENSION PRINT		
40141		

**SHIPCO PUMPS**  
 MANUFACTURED BY  
 SHIPPENSBURG PUMP COMPANY INC.  
 P.O. Box 279 Shippenburg, Pa. 17257  
 PHONE 717 532-7321 / FAX 717 532-7704  
 WWW.SHIPCO PUMPS.COM  
 SHIPCO® IS A REGISTERED TRADEMARK OF SHIPPENSBURG PUMP CO., INC.