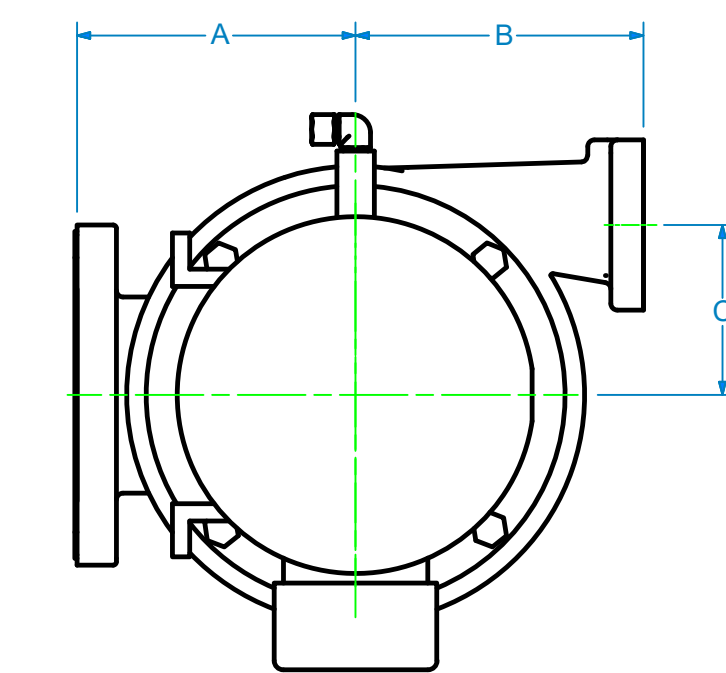


- NOTE:
 1. DRAWING IS FOR REFERENCE ONLY
 2. ALL DIMENSIONS ARE APPROXIMATE
 3. CONSULT FACTORY FOR CUSTOM APPLICATIONS

D	L	GAL.	INLET	OVERFLOW	VENT	DRAIN	A	B	C	E	F	G
22	30	49	4 NPT	2 NPT	2 1/2 NPT	1/2 NPT	26	19	40 5/8	32 1/4	18	18
24	36	70	4 NPT	2 NPT	2 1/2 NPT	1/2 NPT	28	21	46 5/8	34 1/4	20	20
24	48	94	4 NPT	2 NPT	2 1/2 NPT	1/2 NPT	28	21	58 5/8	34 1/4	20	20
24	60	117	4 NPT	2 NPT	2 1/2 NPT	3/4 NPT	28	21	70 5/8	34 1/4	20	20
30	48	147	4 NPT	2 NPT	2 1/2 NPT	3/4 NPT	34	27	58 5/8	40 1/4	26	26
30	60	184	4 NPT	2 1/2 NPT	3 NPT	1 NPT	34	27	70 5/8	40 1/4	26 3/16	26
32	60	209	4 FLG	2 1/2 NPT	4 NPT	1 NPT	36	28 5/8	71 1/12	42 1/4	27 7/8	28
30	72	220	6 FLG	2 1/2 NPT	4 NPT	1 NPT	34	26 5/8	83 3/16	40 1/4	25	26
36	60	264	6 FLG	2 1/2 NPT	4 NPT	1 NPT	40	32 5/8	71 3/16	46 1/4	31	32
36	72	317	6 FLG	2 1/2 NPT	4 NPT	1 NPT	40	32 5/8	83 3/16	46 1/4	31	32
36	84	370	6 FLG	2 1/2 NPT	4 NPT	1 NPT	40	32 5/8	95 3/16	46 1/4	31	32
42	72	432	6 FLG	2 1/2 NPT	4 NPT	1 NPT	46	38 5/8	83 3/16	52 1/4	37	38
42	84	504	8 FLG	3 NPT	6 FLG	1 NPT	46	37 5/8	95 3/16	52 1/4	35 3/16	38



NOTE: A = 0 FOR ALL END SUCTION PUMPS

MODEL	A	B	C
106-D	4 3/4	4	3 1/2
110-D	4 3/4	4 1/4	0
113-D	5 3/8	5 7/16	3 1/4
114-D	7	6 3/4	3 1/4
116-D	5 3/8	8 3/8	3 1/4
116-AWF	6 9/16	5 7/8	3 1/8
117-D	5 3/8	5 7/16	-9/16
121-D	5 3/8	6 11/16	-9/16
121-AW	0	6 3/4	3 3/4
127-D	5 3/8	6 11/16	3 1/4
128-D	7	3 13/16	5
129-D	7	6 3/4	5
129-AW	0	8 1/4	5
130-D	7	6 3/4	5
130-AW	0	8 1/4	5
131-D	7	6 3/4	5 3/4
132-D	8 1/2	8	6 3/8
133-AW	8 1/2	9 1/8	5 3/4



SHIPPENSBURG PUMP CO., INC.

P.O. Box 279 Shippensburg, PA 17257
 (717) 532-7321 • www.shipcopumps.com

SHIPCO® is a registered trademark of Shippensburg Pump Co., Inc.

**CYLINDRICAL STEEL ELEVATED
 CONDENSATE UNIT**

SECTION	DRAWING NO.	REV.	DATE
CSEC	TK-CSEC-LIT	0	4/24/2020