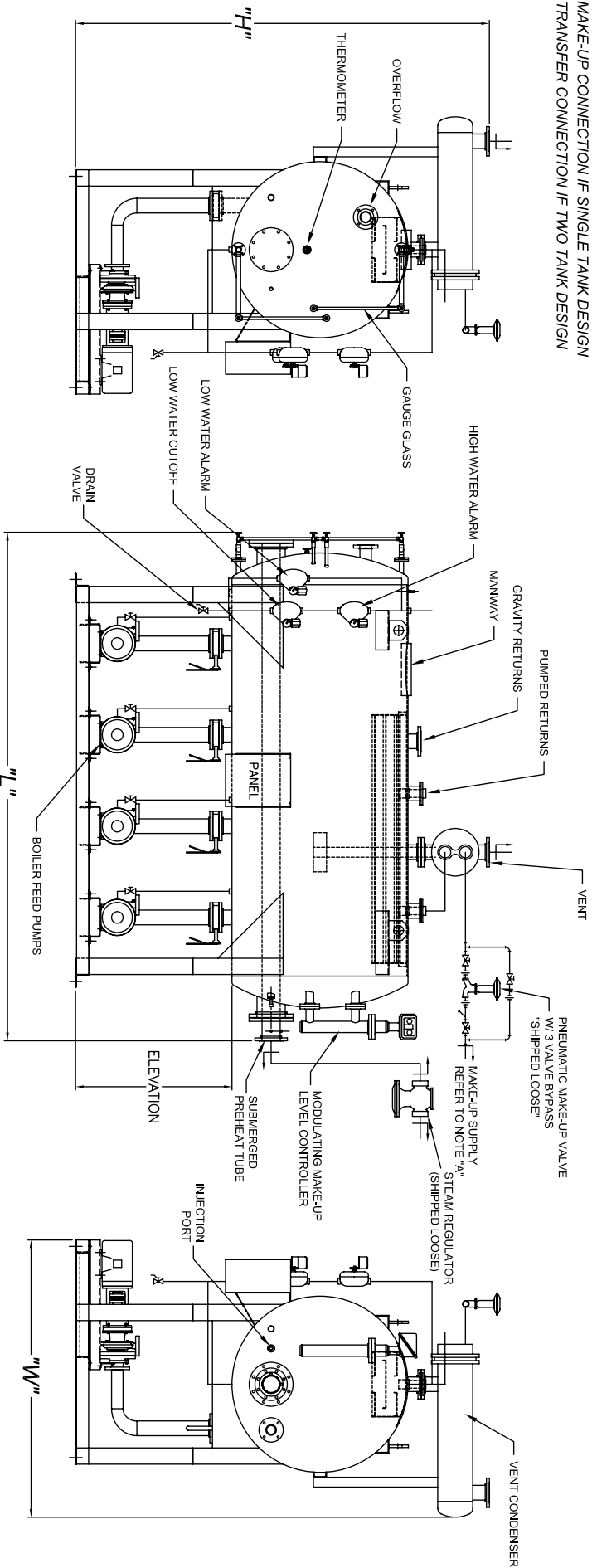


NOTE "A"  
 MAKE-UP CONNECTION IF SINGLE TANK DESIGN  
 TRANSFER CONNECTION IF TWO TANK DESIGN



SELECTED CAPACITIES AND OVERALL DIMENSIONS

STANDARD RECEIVER SIZE	THICK	NET RECIPIERS GALLONS	SYSTEM SIZE based on 10 min. Storage Capacity			APPROXIMATE OVERALL DIMENSIONS *		
			Boiler Horsepower	lb/hr Steam	Length	Width	Height	
36 x 60	3/16	180	260	9,000	102	90	104	
36 x 72	3/16	223	320	11,000	114	90	104	
36 x 84	3/16	260	375	13,000	126	90	104	
42 x 72	3/16	306	435	15,000	116	93	110	
42 x 84	3/16	358	520	18,000	128	93	110	
42 x 96	3/16	400	580	20,000	140	93	110	
48 x 84	1/4	465	665	23,000	130	96	116	
48 x 96	1/4	532	780	27,000	142	96	116	
48 x 120	1/4	665	985	34,000	166	96	116	
54 x 120	5/16	825	1,215	42,000	170	100	122	
60 x 120	5/16	1,025	1,505	52,000	172	102	128	
60 x 144	5/16	1,295	1,885	65,000	196	102	128	
66 x 120	5/16	1,440	2,085	72,000	174	105	134	
66 x 144	5/16	1,670	2,435	84,000	198	105	134	
72 x 120	3/8	1,785	2,610	90,000	174	118	140	
72 x 144	3/8	2,080	3,015	104,000	198	118	140	

DRAWING FOR REFERENCE USE ONLY

"H" DIMENSION BASED ON 48" ELEVATION

INDICATES WHERE SHIPCO PIPING ENDS

"ALL DIMENSIONS ARE APPROXIMATE"

NOTE "A"

MAKE-UP CONNECTION IF SINGLE TANK DESIGN  
 TRANSFER CONNECTION IF TWO TANK DESIGN

**SHIPCO®**  
 SHIPCO PUMPS

MANUFACTURED BY  
 SHIPPENSBURG PUMP COMPANY INC.  
 P.O. Box 279 Shippenburg, Pa. 17257  
 PHONE 717 532-7321 / FAX 717 532-7704  
 WWW.SHIPCO PUMPS.COM

SHIPCO® IS A REGISTERED TRADEMARK OF SHIPPENSBURG PUMP CO., INC.  
 .005 DA-1ST / .005 DA-1ST-2T  
 ATMOSPHERIC DESIGN  
 HORIZONTAL PUMPS

DRAWN BY S.A.D. DATE 6/09 REVISION .2

DIMENSION PRINT# 402999

Section .005 A DA Page 2500

\* BASE FOOTPRINT IS APPROXIMATE AND VARIES DEPENDING ON PUMP SELECTION. CONSULT FACTORY FOR CUSTOMIZATION.