

Boiler Blow-Off size and operating pressure determines Blow Down Tank sizing.

The ASME design pressure of the Blow Down Tank should equal a minimum 25% of the boiler operating pressure.

Selection based on matching your operating pressure and bottom Blow Down valve size. The largest valve size and highest pressure should be used for multiple boilers.

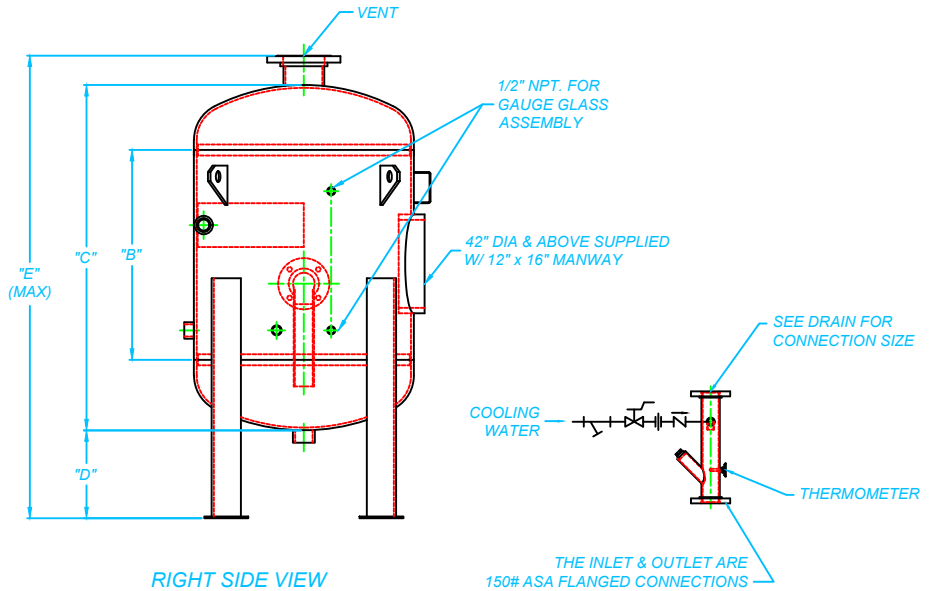
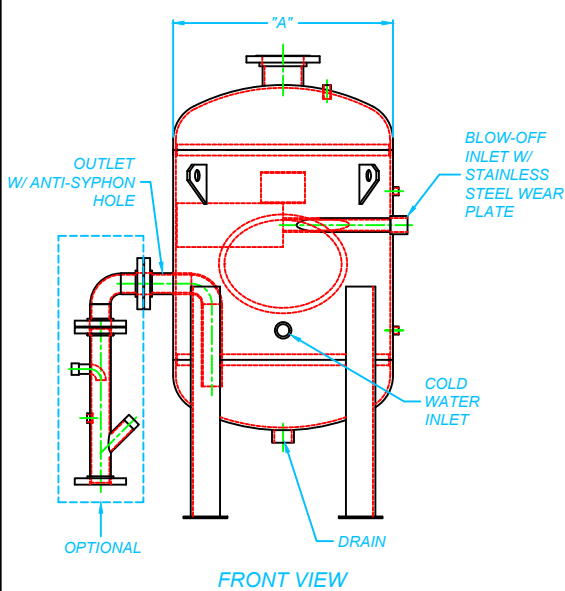
If boiler pressure is greater than listed operating size, go to next line. If boiler pressure exceeds chart consult factory.

All optional Aftercooler for cooling blowdown discharge that is entering public sewers and waters. Temperatures set at 140 deg. as standard.

Representative's responsibility when ordering to meet appropriate local, state or insurance codes.

Fittings threaded or 150# flanged as standard (300# flanges optional).

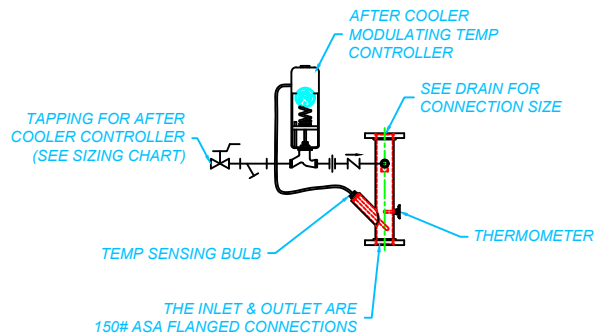
Vessels ASME code stamped for 150 PSIG (consult factory for higher pressure ratings).



OPTIONAL MANUAL AFTER COOLER PIPING

~ALL DIMENSIONS ARE APPROXIMATE~

SIZE "A" x "B"	GALLONS	EMPTY WEIGHT	"C"	"D"	"E"	DRAIN
14" x 54"	35	350	66"	12"	82"	2" NPT.
18" x 58"	66	450	72"	12"	88"	2" NPT.
20" x 57"	84	500	72"	12"	88"	2" NPT.
24" x 54"	117	550	72"	12"	88"	2" NPT.
30" x 58"	202	650	78"	12"	94"	2" NPT.
36" x 56"	291	950	78"	12"	94"	2" NPT.
42" x 52"	387	1100	78"	12"	94"	2" NPT.
48" x 49"	520	1500	78"	12"	94"	2" NPT.
54" x 53"	690	1800	84"	12"	100"	2" NPT.
60" x 49"	825	2600	84"	12"	100"	2" NPT.
66" x 47"	1000	2900	84"	12"	100"	2" NPT.
72" x 44"	1177	3200	84"	12"	100"	2" NPT.



OPTIONAL AUTOMATIC AFTER COOLER PIPING

BASED ON 40# COOLING WATER SUPPLY PRESSURE

BOILER INLET SIZE	BOILER PSIG								
	0-50			51-150			151-300		
	OUTLET	VENT	COLD WATER INLET	OUTLET	VENT	COLD WATER INLET	OUTLET	VENT	COLD WATER INLET
1"	2 1/2"	2 1/2"	2"	4"	4"	2"	5"	5"	2"
1 1/4"	4"	4"	2"	4"	4"	2"	6"	6"	2"
1 1/2"	5"	4"	2"	5"	5"	2"	8"	8"	2 1/2"
2"	6"	6"	2"	6"	6"	2 1/2"	8"	10"	3"
2 1/2"	6"	6"	2"	8"	8"	2 1/2"	10"	10"	3"

SHIPCO[®]
PUMPS

MANUFACTURED BY
SHIPPENBURG PUMP COMPANY INC.
P.O. Box 279 Shippensburg, Pa. 17257
PHONE 717 532-7321 / FAX 717 532-7704
WWW.SHIPCO.PUMPS.COM

SHIPCO[®] IS A REGISTERED TRADEMARK OF SHIPPENBURG PUMP CO., INC.

Model BDT

Blow Down Tank
ASME Code Stamped For 150 PSIG

DRAWN BY M.GLADFELTER	DATE 3/10	REVISION .2
--------------------------	--------------	----------------

DIMENSION PRINT
BLOW DOWN TANK