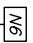


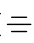
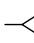
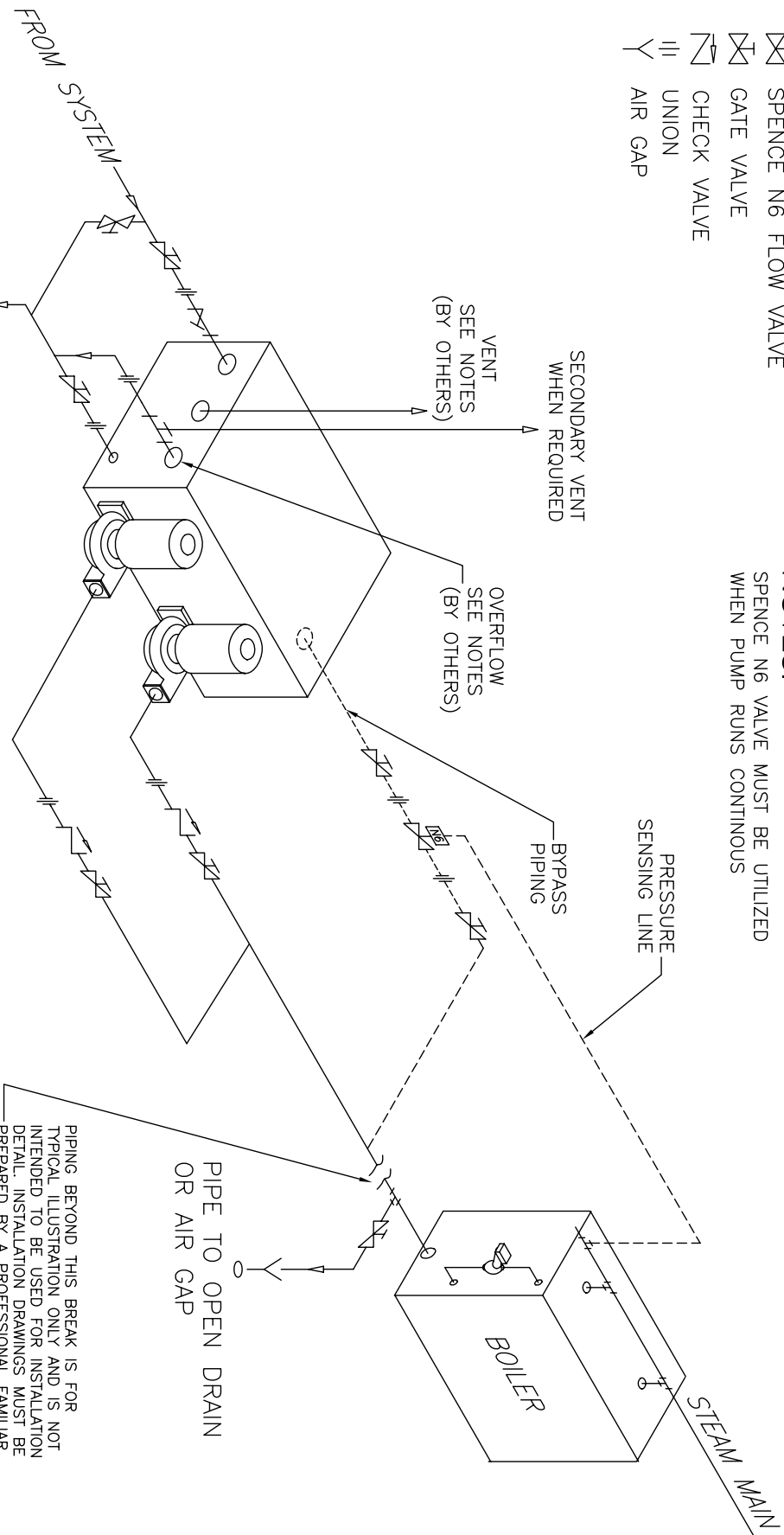


-  SPENCE N6 FLOW VALVE
-  GATE VALVE
-  CHECK VALVE
-  UNION
-  AIR GAP

NOTES:
 SPENCE N6 VALVE MUST BE UTILIZED
 WHEN PUMP RUNS CONTINUOUS



PIPE TO OPEN DRAIN
 OR AIR GAP

SHIPCO®
SPUMPS

MANUFACTURED BY
 SHIPPENSBURG PUMP COMPANY, INC.
 P.O. Box 279 Shippenburg, Pa. 17257
 PHONE 717 532-7321 / FAX 717 532-7704
 WWW.SHIPCOPIUMPS.COM
 SHIPCO® IS A REGISTERED TRADEMARK OF SHIPPENSBURG PUMP CO., INC.

NOTES:

- INSTALL FULL SIZE (MINIMUM SIZE) VENT TO ATMOSPHERE.
- INSTALL FULL SIZE (MINIMUM SIZE) OVERFLOW TO AIR-GAP OR OPEN DRAIN.
- VENT PIPING DETAIL MUST BE DESIGNED AND INSTALLED BY A PROFESSIONAL LICENSED & REGISTERED AS REQUIRED FAMILIAR WITH EQUIPMENT AND ITS INTENDED USE TO MEET ALL LOCAL, STATE AND FEDERAL CODES RULES AND REGULATIONS.
- MOST CURRENT BOILER MANUFACTURERS REQUIRE A BOILER FEED UNIT FEEDING THE BOILER IN LIEU OF A CONDENSATE UNIT.

PIPING BEYOND THIS BREAK IS FOR
 TYPICAL ILLUSTRATION ONLY AND IS NOT
 INTENDED TO BE USED FOR INSTALLATION
 DETAIL. INSTALLATION DRAWINGS MUST BE
 PREPARED BY A PROFESSIONAL FAMILIAR
 WITH THE EQUIPMENT AND ITS INTENDED
 USE TO MEET ALL LOCAL, STATE &
 FEDERAL CODES, RULES & REGULATIONS.

PIPE TO OPEN DRAIN
 OR AIR GAP

Typical Piping Diagram
 Condensate / Boiler Feed
 for Turbine Pump Applications

DRAWN BY	DATE	REVISION
J. BROOKENS	6/04	.1
DIMENSION PRINT		
Section DC Page 3000		