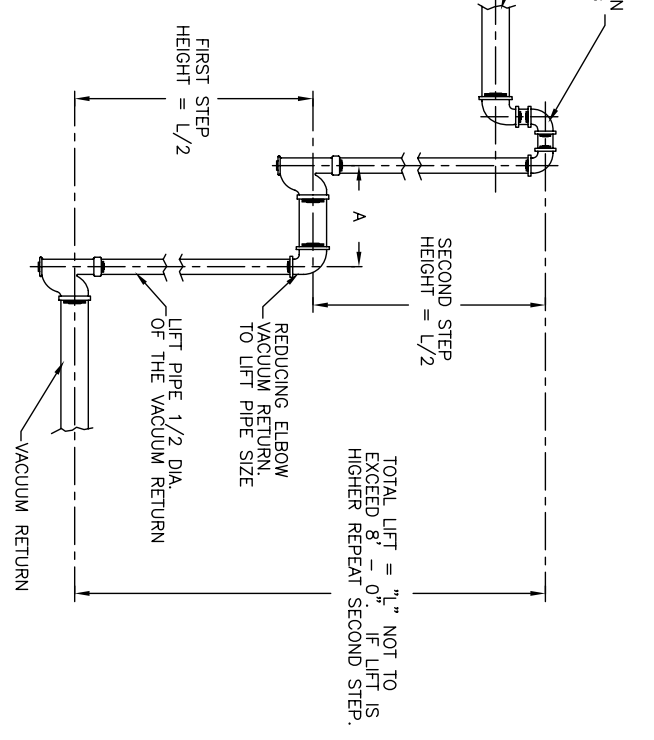
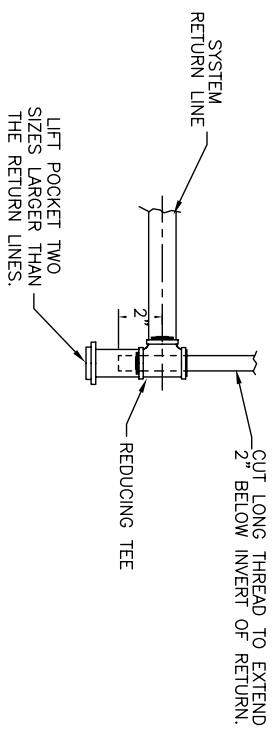


METHOD OF CONSTRUCTING A LIFT IN A RETURN LINE



CONSTRUCTION OF STEP LIFT



HOW TO BUILD A LIFT FITTING

VACUUM RETURN	A
1"	7"
1 1/4"	8"
1 1/2"	9"
2"	10"
2 1/2"	14"
3"	15"
4"	18"
5"	21"
6"	24"



MANUFACTURED BY
 SHIPPENSBURG PUMP COMPANY INC.
 P.O. Box 279 Shippensburg, Pa. 17257
 PHONE 717 532-7321 / FAX 717 532-7704
 WWW.SHIPCOPIUMPS.COM
 SHIPCO® IS A REGISTERED TRADEMARK OF SHIPPENSBURG PUMP CO., INC.

Lifts in Vacuum Return Lines

DRAWN BY	DATE	REVISION
C. REED	6/04	.1
DIMENSION PRINT		
30020		
Section LRV Page 1000		