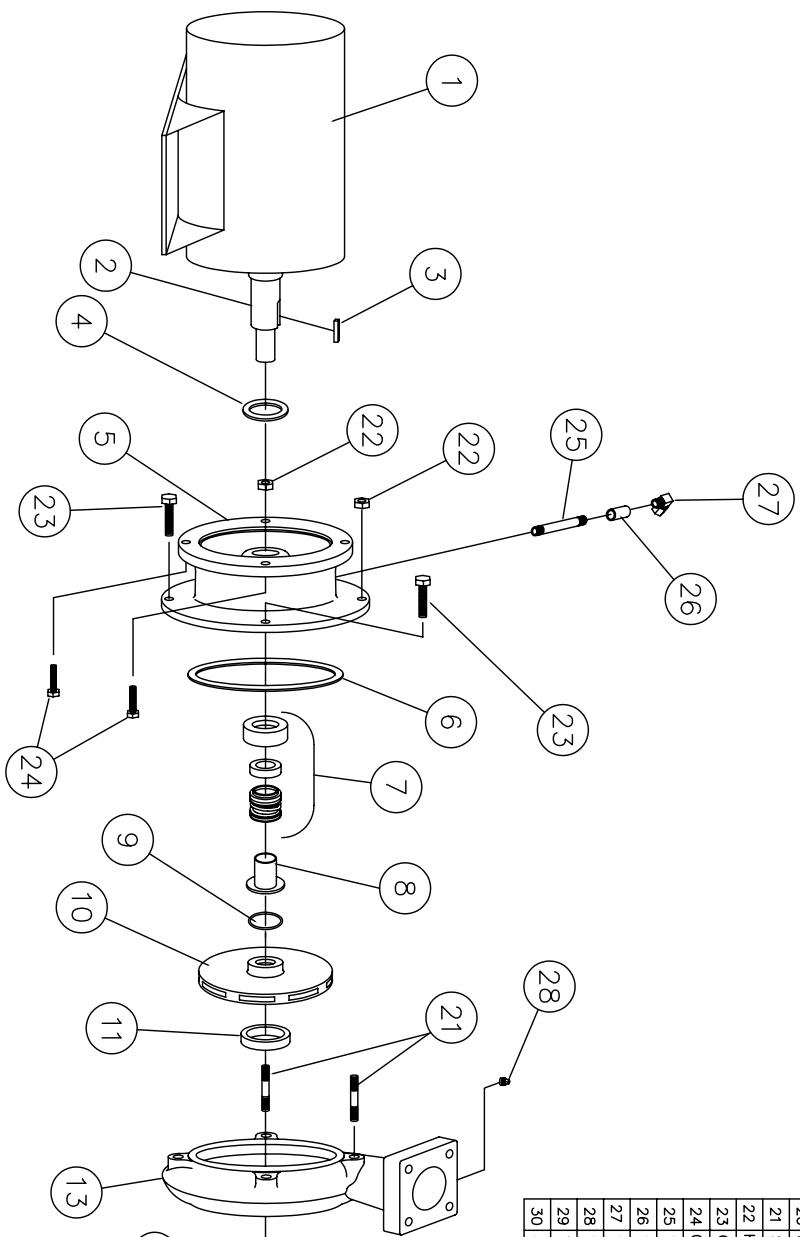


SHIPCO PUMPS

MANUFACTURED BY
 SHIPPENSBURG PUMP COMPANY INC.
 P.O. Box 279 Shippensburg, Pa. 17257
 PHONE 717 532-7321 / FAX 717 532-7704
 WWW.SHIPCO PUMPS.COM
 SHIPCO® IS A REGISTERED TRADEMARK OF SHIPPENSBURG PUMP CO., INC.

113 Model P Horiz End Suction JM Frames 143, 145, 182, & 184

DRAWN BY M.LINEAWEAVER DATE 9/04 REVISION .6
 PARTS LIST # PL-81310
 QUBE PART # 113PHJM



NO.	DESCRIPTION	PART NO.	QTY.
1	MOTOR	JM FRAME	1
2	MOTOR SHAFT		1
3	KEY (MOTOR TO IMPELLER)	KEYBAR-SB-019-OVR	1
4	WATER SLINGER	SLINGER-SDWS99998	1
5	PUMP HEAD	HEAD-SDPH00133	1
6	HEAD GASKET	GASKET-SDP003826	1
7	MECHANICAL SEAL 1 1/8"	MCHSEAL-SDP500155	1
8	SHAFT SLEEVE	SHTSLVE-SDP000218	1
9	"O" RING (SHAFT SLEEVE)	ORNG-SDP000051	1
10	IMPELLER	IMP-SDP00127-A	1
11	WEARING RING	WRGRING-SDPWR0158	1
12	PUMP CASE	CASE-SDP000126	1
13	PROPELLER STEM	PROPSTM-SDP500673	1
14	STRAIGHTENING VANES	STRVANE-SDPS00122	1
15	PROPELLER STEM BOLT	PROPSBM-SDPS00672	1
16	PROPELLER	PROPELLR-SDPP00660-A	1
17	SUCTION HOUSING GASKET	GASKET-SDPG03829	1
18	SUCTION HOUSING	SUCHSG-SDPF00050-B	1
19	CAPSCREWS (SUCTION HOUSING TO CASE)	FTRCP-SHZ-0038C-0125-2	3
20	SUCTION GASKET	FLG-ASA-SP15-KT-0300	1
21	STUD	FTRSUD-2P-0038C-0138-2	2
22	HEX NUT (HEAD TO CASE)	FTRNUT-2HZ-0038C-2	2
23	CAPSCREWS (HEAD TO CASE)	FTRCAP-SHZ-0038C-0100-2	2
24	CAPSCREWS (MOTOR TO HEAD)	FTRCAP-SHZ-0038C-0075-2	4
25	1/4" NIPPLE 1/4 x 1 1/2	NIPPLE-B-0025x150	1
26	1/4" FULL COUPLING	CLP-FGB-0025	1
27	1/4" 90° COMPRESSION FITTING	CPMFTG-R-MELL-025-025	1
28	WOODRUFF KEY #405	PF-PLUGSD-SLD-B-0025	1
29	WOODRUFF KEY #405	KEYWOOD-WOODRUFF-#405	1
30	#10-32 SET SCREWS x 1/4" LG	FTRSET-SB-0010F-0025	2