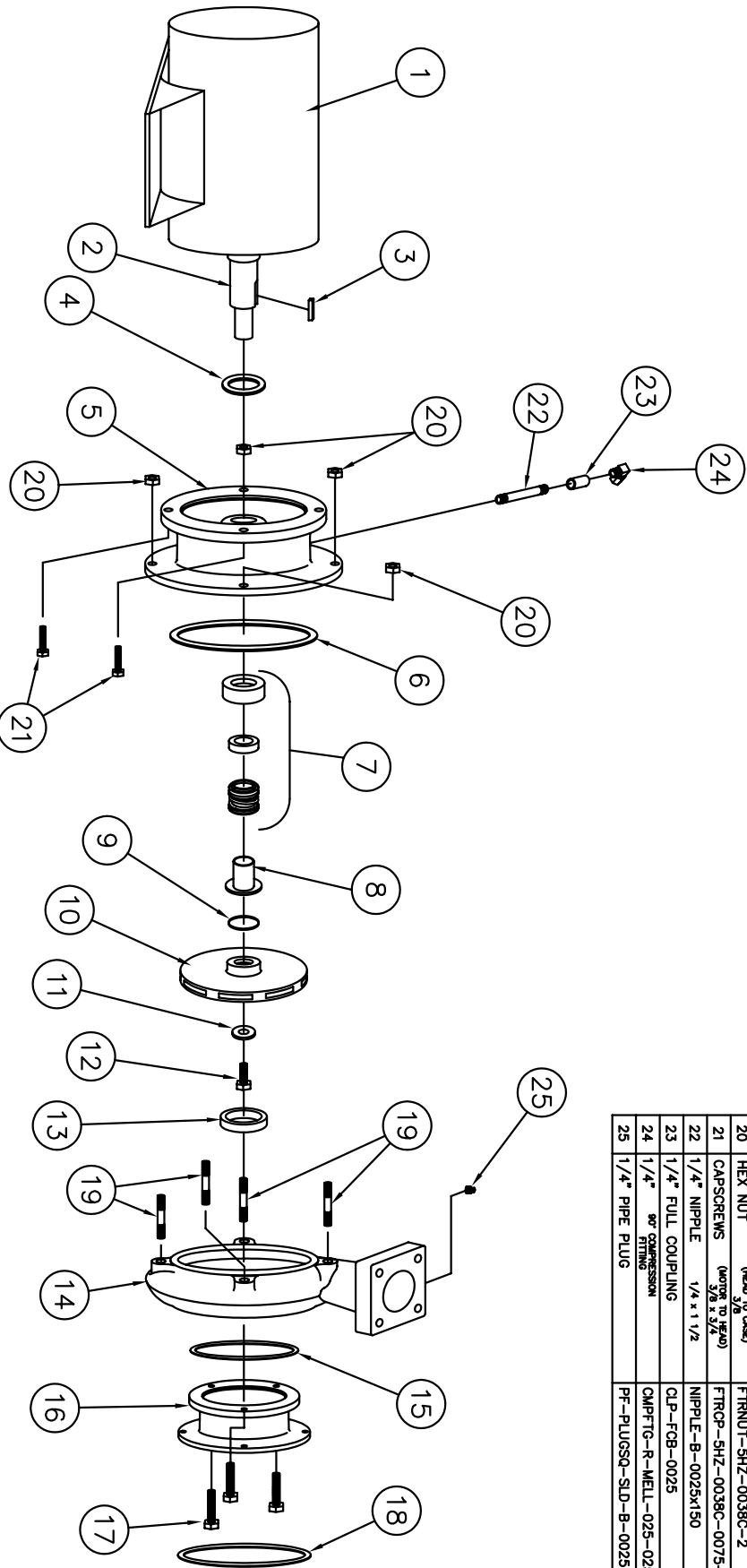


# SHIPCO PUMPS

MANUFACTURED BY  
 SHIPPENSBURG PUMP COMPANY INC.  
 P.O. Box 279 Shippenburg, Pa. 17257  
 PHONE 717 532-7321 / FAX 717 532-7704  
 WWW.SHIPCO PUMPS.COM  
 SHIPCO® IS A REGISTERED TRADEMARK OF SHIPPENSBURG PUMP CO., INC.

## 113 Model D Horiz End Suction JM Frames 213, & 215

DRAWN BY J.BROOKENS	DATE 2/10	REVISION .1
PARTS LIST #	PL-81328	
QUBE PART #	113DHJML	



PARTS LIST			
NO.	DESCRIPTION	PART NO.	QTY.
1	MOTOR	JM FRAME	1
2	MOTOR SHAFT		1
3	KEY (MOTOR TO IMPELLER)	KEYBAR-S8-019-01R	1
4	WATER SLINGER	SLINGER-SWS99998	1
5	PUMP HEAD	HEAD-SDPH00133-1	1
6	HEAD GASKET	GASKET-SDP003826	1
7	MECHANICAL SEAL 1 1/8"	MCHSEAL-SDPS00155	1
8	SHAFT SLEEVE	SHTSLV-SDPC00218	1
9	"O" RING (SHAFT SLEEVE)	ORING-SDP000051	1
10	IMPELLER	IMP-SDPI00127-A	1
11	IMPELLER WASHER	IMPWHR-SDPRW00237	1
12	CAPSCREW 3/8 x 1"	FTRCP-HS8-0038C-0100-2	1
13	WEARING RING	WRGRING-SDPW0158	1
14	PUMP CASE	CASE-SDPC00126	1
15	O-RING (PART #50)	ORING-SDP000046	1
16	SUCTION HOUSING	SUCHSG-SDPF00050-B	1
17	CAPSCREWS (SUCTION HOUSING 1/2 CASE)	FTRCP-SHZ-0038C-0125-2	3
18	SUCTION GASKET	FLG-ASA-SP15-GRT-0300	1
19	STUD (HEAD TO CASE) 3/8 x 1 3/8	FTRSTUD-2P-0038C-0138-2	4
20	HEX NUT (HEAD TO CASE) 3/8	FTRNUT-SHZ-0038C-2	4
21	CAPSCREWS (MOTOR HEAD) 3/8 x 3/4	FTRCP-SHZ-0038C-0075-2	4
22	1/4" NIPPLE	NIPPLE-B-0025X150	1
23	1/4" FULL COUPLING	CLP-FCB-0025	1
24	1/4" 90° COMPRESSION FITTING	CMPTG-R-MELL-025-025	1
25	1/4" PIPE PLUG	PF-PLUGSQ-SLD-B-0025	1