

SHIPCO PUMPS

MANUFACTURED BY

SHIPPENSBURG PUMP COMPANY INC.

P.O. Box 279 Shippenburg, Pa. 17257

PHONE 717 532-7321 / FAX 717 532-7704

WWW.SHIPCO.PUMPS.COM

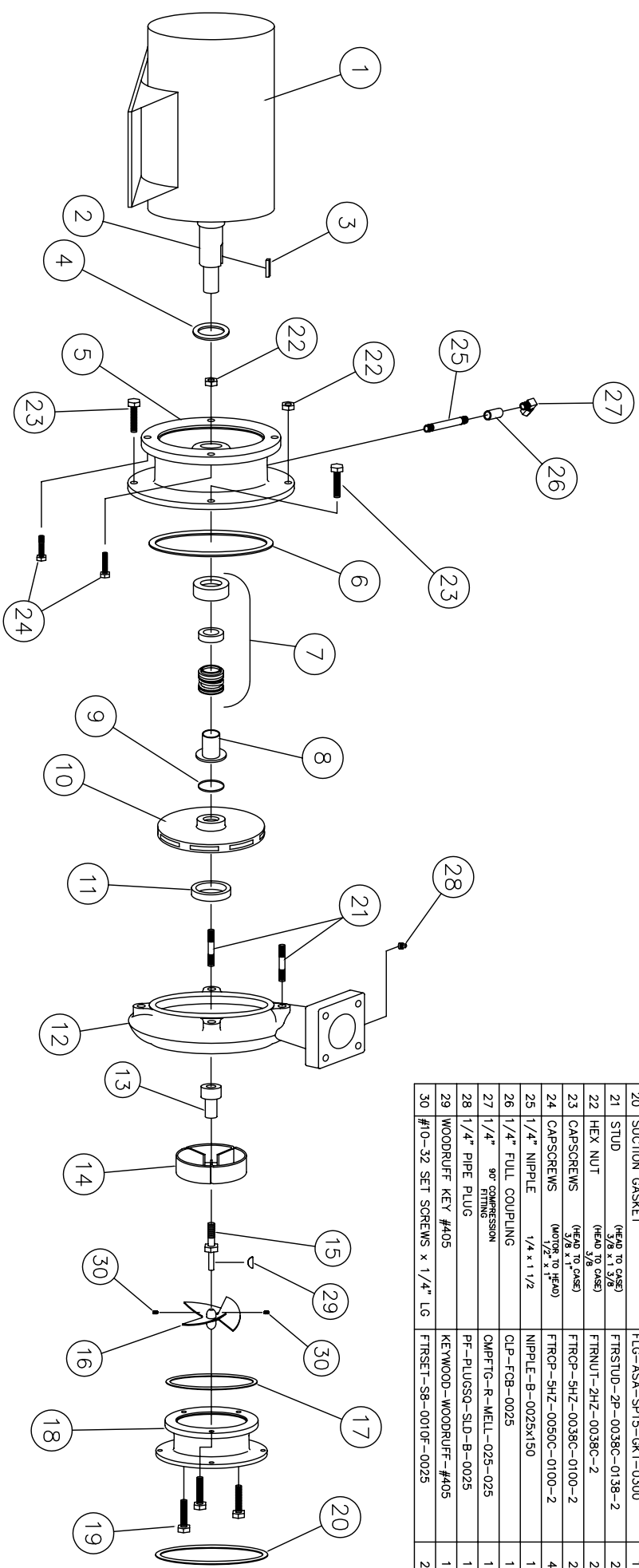
SHIPCO® IS A REGISTERED TRADEMARK OF SHIPPENSBURG PUMP CO., INC.

1 1/4 Model P Horiz End Suction JM Frames 213 & 215 130 GPM & Less

DRAWN BY M. LINEAWEAVER DATE 9/04 REVISION .6

PARTS LIST # PL-81414

QUEB PART # 114PHJM-L



PARTS LIST

NO.	DESCRIPTION	PART NO.	QTY.
1	MOTOR	JM FRAME	1
2	MOTOR SHAFT	KEYBAR-SB-019-OVR	1
3	KEY (MOTOR TO IMPELLER)	SLINGER-SDMS99998	1
4	WATER SLINGER	HEAD-SDPH00133-1	1
5	PUMP HEAD	GASKET-SDPG03826	1
6	HEAD GASKET	MCHSEAL-SDPS00155	1
7	MECHANICAL SEAL 1 1/8"	SHTSLEEVE-SDPC00218	1
8	SHAFT SLEEVE	ORING-SDPO 00051	1
9	"O" RING (SHAFT SLEEVE)	IMP-SDPI00147-A	1
10	IMPELLER	WRGRING-SDPWR00068	1
11	WEARING RING	CASE-SDPC00148-A	1
12	PUMP CASE	PROPS1M-SDPS00669	1
13	PROPELLER STEM	STRVANE-SDPS00122	1
14	STRAIGHTENING VANES	PROPS1M-SDPS00670	1
15	PROPELLER STEM BOLT	PROPELR-SDPP00660-A	1
16	PROPELLER	GASKET-SDPG03828	1
17	SUCTION HOUSING GASKET	SUCHSG-SDPF00050-C	1
18	SUCTION HOUSING	FTRGP-6HZ-0038C-0125-2	3
19	CAPSCREWS (SUCTION HOUSING TO CASE)	FLG-ASA-SP15-GKT-0300	1
20	SUCTION GASKET	FTRSTUD-2P-0038C-0138-2	2
21	STUD	FTRNUT-2HZ-0038C-2	2
22	HEX NUT	FTRCAP-SHZ-0038C-0100-2	2
23	CAPSCREWS (HEAD TO CASE)	FTRGP-SHZ-0050C-0100-2	4
24	CAPSCREWS (MOTOR TO HEAD)	NIPPLE-B-0025x150	1
25	1/4" NIPPLE	CLP-FCB-0025	1
26	1/4" FULL COUPLING	OMPFTG-R-MELL-025-025	1
27	1/4" 90° COMPRESSION FITTING	PF-PLUGSQ-SLD-B-0025	1
28	1/4" PIPE PLUG	KEYWOOD-WOODRUFF-#405	1
29	WOODRUFF KEY #405	FTRSET-S8-0010F-0025	2
30	#10-32 SET SCREWS x 1/4" LG		