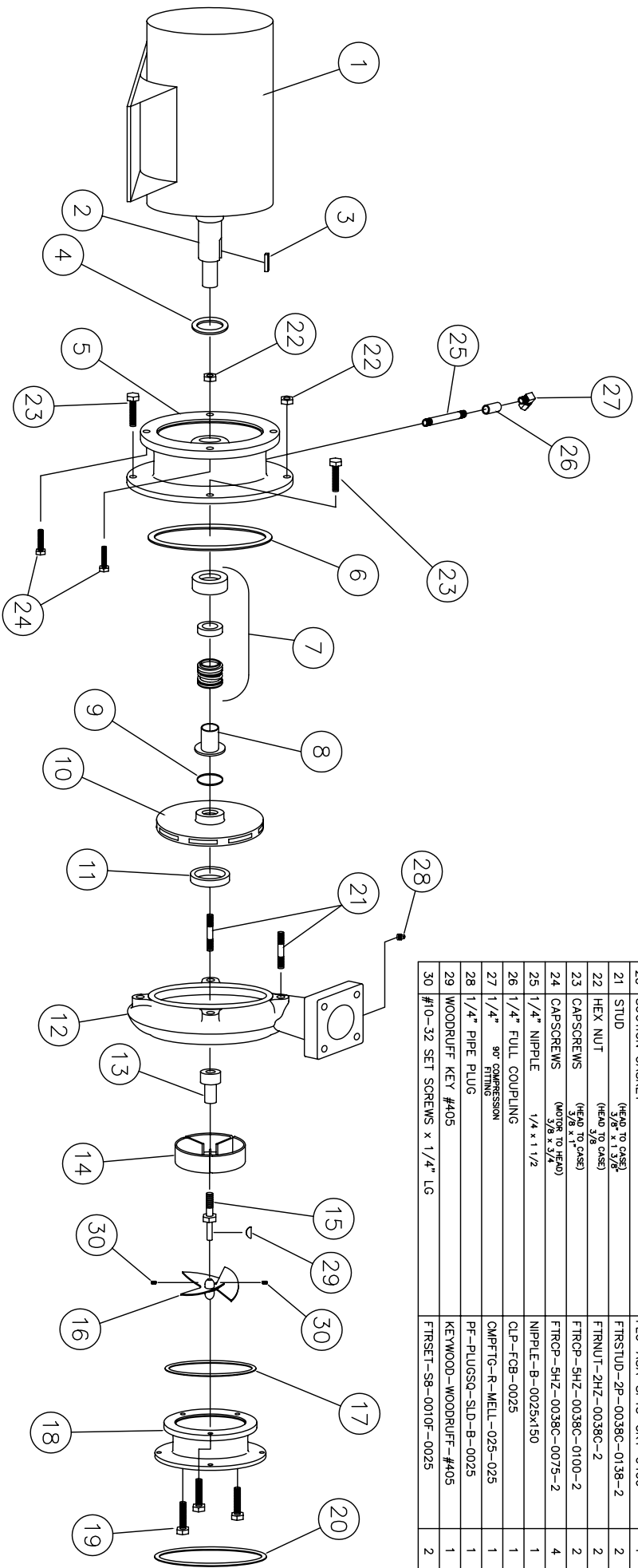


# SHIPCO PUMPS

MANUFACTURED BY  
 SHIPPENSBURG PUMP COMPANY INC.  
 P.O. Box 279 Shippenburg, Pa. 17257  
 PHONE 717 532-7321 / FAX 717 532-7704  
 WWW.SHIPCO PUMPS.COM  
 SHIPCO® IS A REGISTERED TRADEMARK OF SHIPPENSBURG PUMP CO., INC.

114 Model P Horiz End Suction  
 JM Frame's 143, 145, 182, & 184  
 Above 130 GPM

DRAWN BY M.LINEAWEAVER DATE 9/04 REVISION .6  
 PARTS LIST # PL-81415  
 QUBE PART # 114PHJM+S



### PARTS LIST

NO.	DESCRIPTION	PART NO.	QTY.
1	MOTOR	JM FRAME	1
2	MOTOR SHAFT		1
3	KEY (MOTOR TO IMPELLER)	KEYBAR-58-019-OVR	1
4	WATER SLINGER	SLINGER-SDWS99998	1
5	PUMP HEAD	HEAD-SDPH00133	1
6	HEAD GASKET	GASKET-SDP03826	1
7	MECHANICAL SEAL 1 1/8"	MCHSEAL-SDPS00155	1
8	SHAFT SLEEVE	SHTSLVE-SDPC00218	1
9	O" RING (SHAFT SLEEVE)	ORING-SDP000051	1
10	IMPELLER	IMP-SDPI00147-A	1
11	WEARING RING	WRGRING-SDPWR00068	1
12	PUMP CASE	CASE-SDPC00148-B	1
13	PROPELLER STEM	PROPSHM-SDPS00669	1
14	STRAIGHTENING VANES	STRVANE-SDPS00139	1
15	PROPELLER STEM BOLT	PROPSHM-SDPS00670	1
16	PROPELLER	PROPELLR-SDPP00660	1
17	SUCTION HOUSING GASKET	GASKET-SDPE03836	1
18	SUCTION HOUSING	SUCHSG-SDPF00025-A	1
19	CAPSCREWS (SUCT HOUSING TO CASE)	FTRCP-5H2-0038C-0100-2	3
20	SUCTION GASKET	FLG-ASA-SP15-GKT-0400	1
21	STUD (HEAD TO CASE) (HEAD TO CASE) 5/8" x 1 3/8"	FTRSTUD-2P-0038C-0138-2	2
22	HEX NUT (HEAD TO CASE) 5/8"	FTRNUT-2HZ-0038C-2	2
23	CAPSCREWS (HEAD TO CASE) 3/8" x 1 1/2"	FTRCP-5H2-0038C-0100-2	2
24	CAPSCREWS (WOODRUFF KEY #405) 3/8" x 3/4"	FTRCP-5H2-0038C-0075-2	4
25	1/4" NIPPLE 1/4" x 1 1/2"	NIPPLE-B-0025x150	1
26	1/4" FULL COUPLING	CLP-FCB-0025	1
27	1/4" 90° FITTING	QMPFTG-R-MELL-025-025	1
28	1/4" PIPE PLUG	PF-PLUGSQ-SLD-B-0025	1
29	WOODRUFF KEY #405	KEYWOOD-WOODRUFF-#405	1
30	#10-32 SET SCREWS x 1/4" LG	FTRSET-S8-0010F-0025	2