

# SHIPCO PUMPS

MANUFACTURED BY

SHIPPENSBURG PUMP COMPANY INC.

P.O. Box 279 Shippenburg, Pa. 17257

PHONE 717 532-7321 / FAX 717 532-7704

WWW.SHIPCO.PUMPS.COM

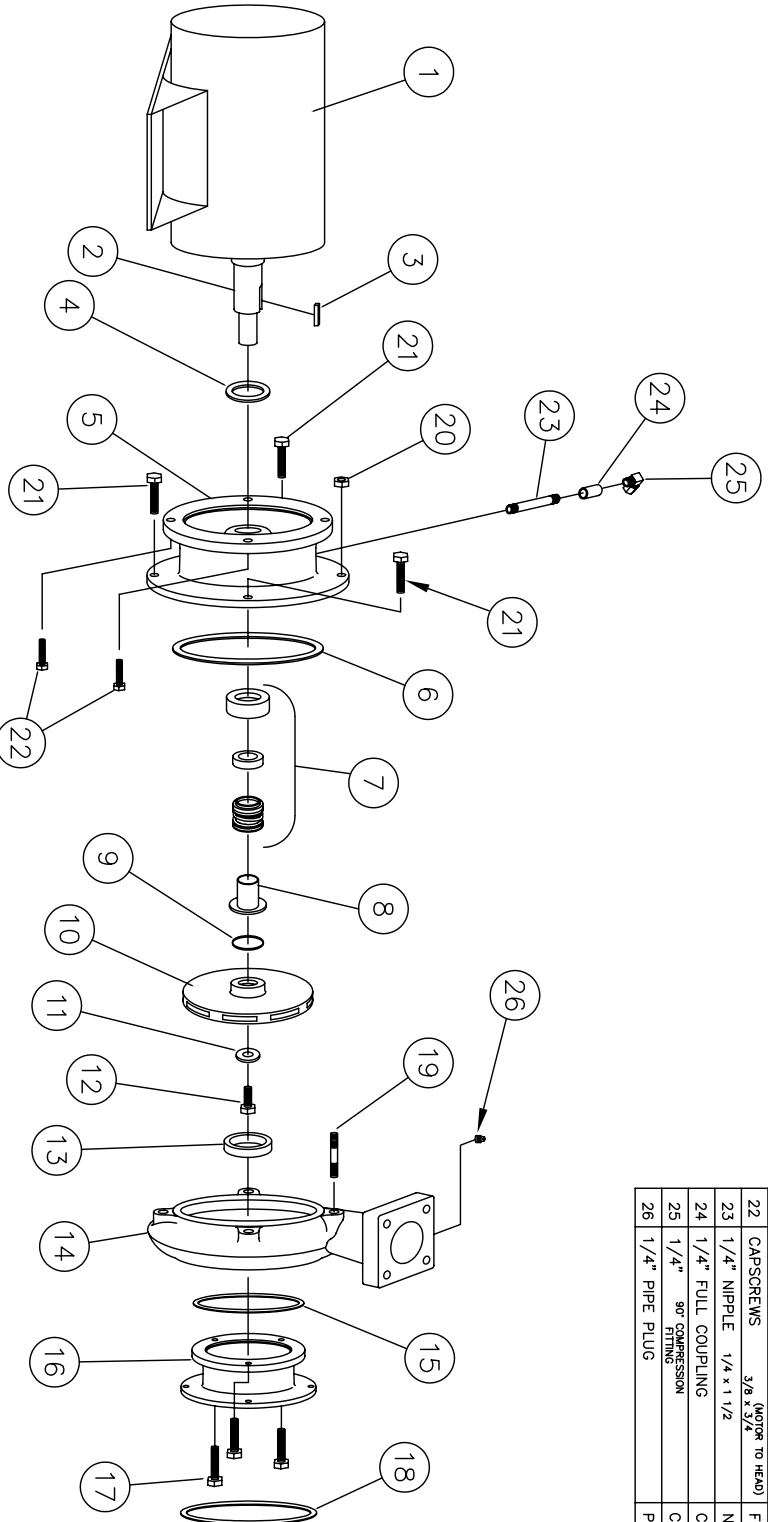
SHIPCO® IS A REGISTERED TRADEMARK OF SHIPPENSBURG PUMP CO., INC.

117 Model D Horiz End Suction  
JM Frames 143, 145, 182, & 184

DRAWN BY J.BROOKENS DATE 6/05 REVISION .6

PARTS LIST # PL-81708

QUEB PART # 117DHJM



PARTS LIST			
NO.	DESCRIPTION	PART NO.	QTY.
1	MOTOR	JM FRAME	1
2	MOTOR SHAFT		1
3	KEY (MOTOR TO IMPELLER)	KEYBAR-SB-019-OVR	1
4	WATER SLINGER	SLINGER-SDWS99998	1
5	PUMP HEAD	HEAD-SDPH00133	1
6	HEAD GASKET	ORING-SDP000213	1
7	MECHANICAL SEAL 1 1/8"	MCHSEAL-SDPS00155	1
8	SHAFT SLEEVE	SHTSLVE-SDP000218	1
9	"O" RING (SHAFT SLEEVE)	ORING-SDPO 00051	1
10	IMPELLER	IMP-SDP100212	1
11	IMPELLER WASHER	IMPWHR-SDPRW00237	1
12	CAPSCREW 3/8 x 1"	FTRCP-HSB-0038C-0100-2	1
13	WEARING RING	WGRING-SDPWR0032	1
14	PUMP CASE	CASE-SDP00036	1
15	SUCTION HOUSING GASKET	GASKET-SDPG03829	1
16	SUCTION HOUSING	SUCHSG-SDPF00050-A	1
17	CAPSCREWS (SUCTION HOUSING TO CASE)	FTRCP-SHZ-0038C-0100-2	3
18	SUCTION GASKET	FLG-ASA-SPT5-CKT-0300	1
19	STUD (HEAD TO CASE)	FTRNUT-2HZ-0038C-2	1
20	HEX NUT (HEAD TO CASE)	FTRNUT-2HZ-0038C-2	1
21	CAPSCREWS (HEAD TO CASE)	FTRCP-9HZ-0038C-0100-2	3
22	CAPSCREWS (MOTOR TO HEAD)	FTRCP-5HZ-0038C-0075-2	4
23	1/4" NIPPLE 1/4 x 1 1/2	NIPPLE-B-0025x150	1
24	1/4" FULL COUPLING	CLP-F0B-0025	1
25	1/4" 90° COMPRESSION FITTING	CMPTG-R-MELL-025-025	1
26	1/4" PIPE PLUG	PF-PLUGSQ-SLD-B-0025	1