

# SHIPCO PUMPS

MANUFACTURED BY

SHIPPENSBURG PUMP COMPANY INC.

P.O. Box 279 Shippenburg, Pa. 17257

PHONE 717 532-7321 / FAX 717 532-7704

WWW.SHIPCO.PUMPS.COM

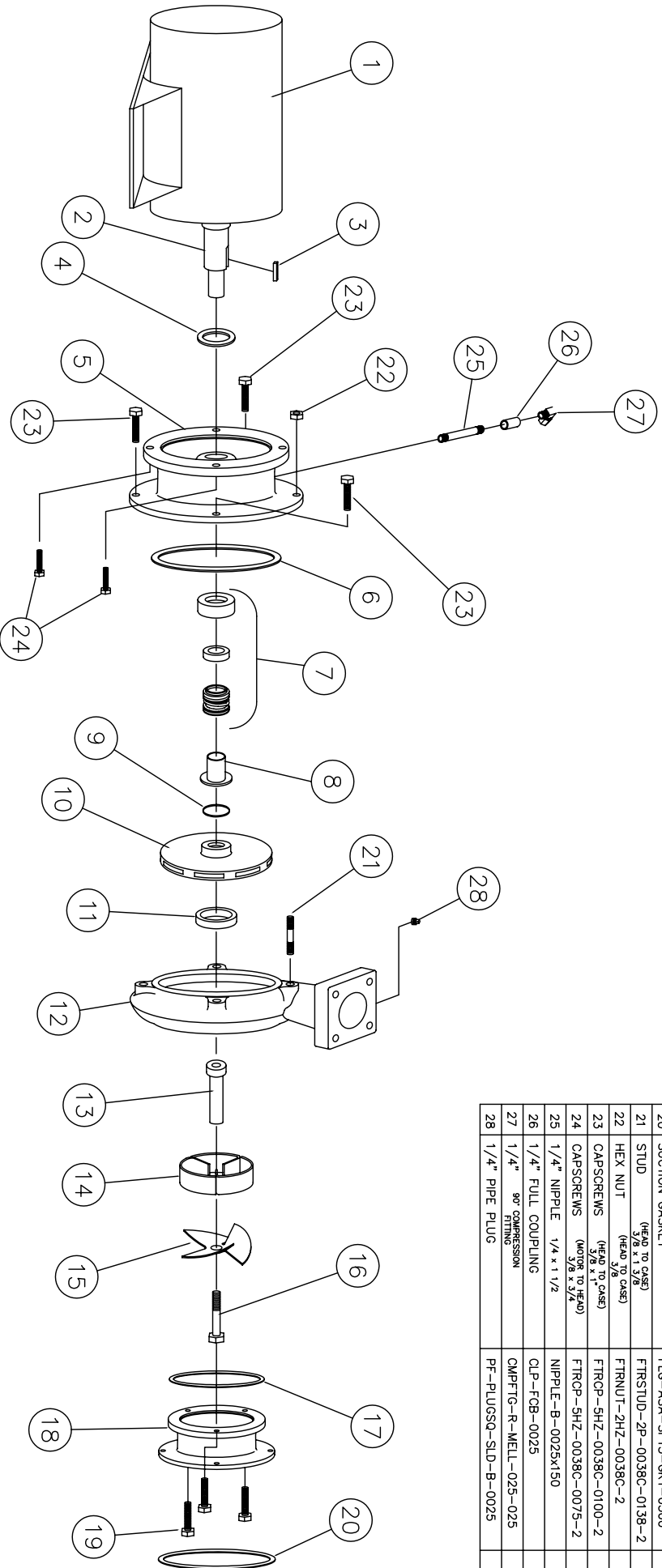
SHIPCO® IS A REGISTERED TRADEMARK OF SHIPPENSBURG PUMP CO., INC.

## 117 Model P Horiz End Suction JM Frames 143, 145, 182, & 184

DRAWN BY J.BROOKENS DATE 9/04 REVISION .5

PARTS LIST # PL-81710

QUEB PART # 117PHJM



### PARTS LIST

NO.	DESCRIPTION	PART NO.	QTY.
1	MOTOR	JM FRAME	1
2	MOTOR SHAFT		1
3	KEY (MOTOR TO IMPELLER)	KEYBAR-S8-019-OVR	1
4	WATER SLINGER	SLINGER-SDMS99999	1
5	PUMP HEAD	HEAD-SDPH00133	1
6	HEAD GASKET	ORING-SDP000213	1
7	MECHANICAL SEAL 1 1/8"	MCHSEAL-SDPS00155	1
8	SHAFT SLEEVE	SHTSLVE-SDPC00218	1
9	"O" RING (SHAFT SLEEVE)	ORING-SDPO 00051	1
10	IMPELLER	IMP-SDPI00212	1
11	WEARING RING	WRGRING-SDPWR0032	1
12	PUMP CASE	CASE-SDPC00036	1
13	PROPELLER STEM	PROPSTM-SDPS00320	1
14	STRAIGHTENING VANES	STRVANE-SDPS00121	1
15	PROPELLER	PROPELR-SDPF00324	1
16	PROPELLER STEM BOLT	FTRCP-HSB-0038C-0275-2	1
17	SUCTION HOUSING GASKET	GASKET-SDPC03856	1
18	SUCTION HOUSING	SUCHSG-SDPF00050-A	1
19	CAPSCREWS (suction housing to case)	FTRCP-SHZ-0038C-0100-2	1
20	SUCTION GASKET	FLG-ASA-SP15-GKT-0300	1
21	STUD (HEAD TO CASE)	FTRSTUD-2P-0038C-138-2	1
22	HEX NUT (HEAD TO CASE)	FTRNUT-2HZ-0038C-2	1
23	CAPSCREWS (HEAD TO CASE)	FTRCP-SHZ-0038C-0100-2	3
24	CAPSCREWS (MOTOR TO HEAD)	FTRCP-SHZ-0038C-0075-2	4
25	1/4" NIPPLE 1/4 x 1 1/2	NIPPLE-B-0025x150	1
26	1/4" FULL COUPLING	CLP-FCB-0025	1
27	1/4" 90° COMPRESSION FITTING	CMPTG-R-MELL-025-025	1
28	1/4" PIPE PLUG	PF-PLUGSQ-SLD-B-0025	1