

SHIPCO PUMPS

MANUFACTURED BY

SHIPPENSBURG PUMP COMPANY INC.

P.O. Box 279 Shippenburg, Pa. 17257

PHONE 717 532-7321 / FAX 717 532-7704

WWW.SHIPCO.PUMPS.COM

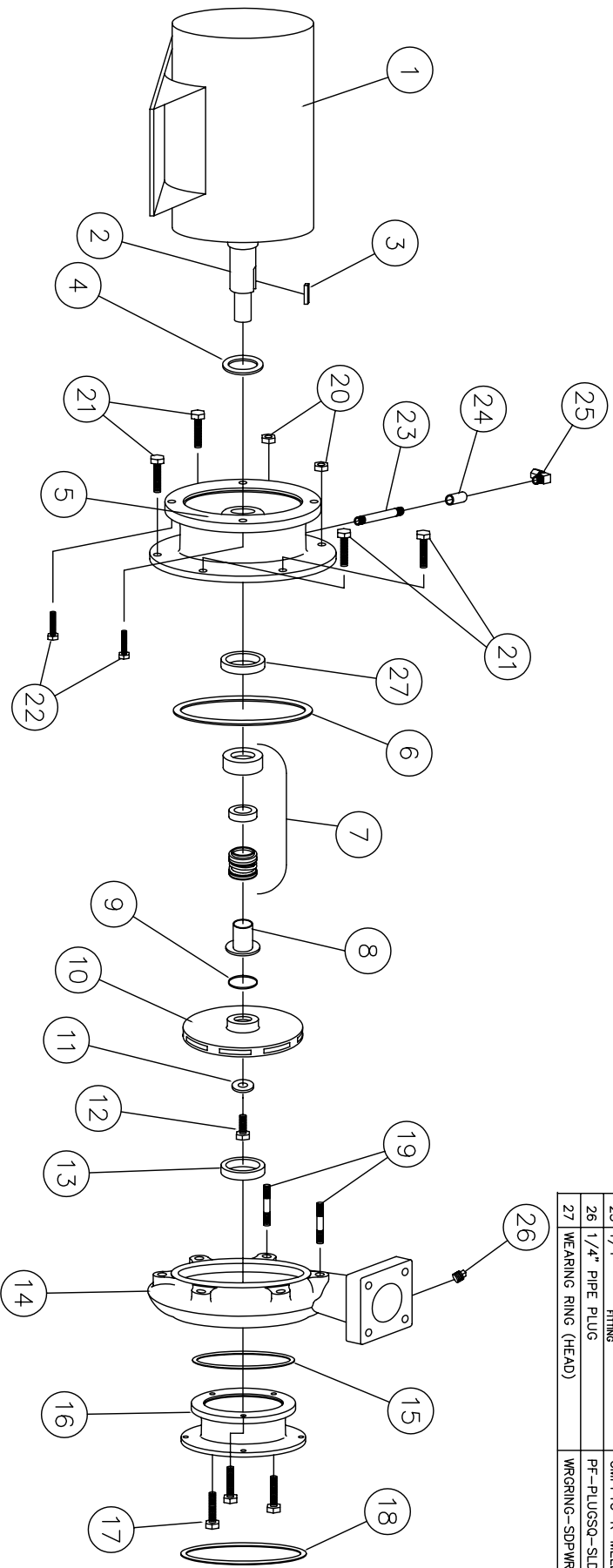
SHIPCO® IS A REGISTERED TRADEMARK OF SHIPPENSBURG PUMP CO., INC.

121 Model D Horiz End Suction
JM Frames 143, 145, 182, & 184
3500 RPM

DRAWN BY J.BROOKENS DATE 9/04 REVISION .1

PARTS LIST # PL-82113

QUEB PART # 121DHYJM(35)S



PARTS LIST

NO.	DESCRIPTION	PART NO.	QTY.
1	MOTOR	JM FRAME	1
2	MOTOR SHAFT		1
3	KEY (MOTOR TO IMPELLER)	KEYBAR-SB-019-OVR	1
4	WATER SLINGER	SLINGER-SDWS99998	1
5	PUMP HEAD	HEAD-SDPH00060-A	1
6	HEAD GASKET (O-RING)	ORING-SDP-0000089	1
7	MECHANICAL SEAL 1 1/8"	MCHSEAL-SDPS00155	1
8	SHAFT SLEEVE	SHTSLVE-SDP000218	1
9	"O" RING (SHAFT SLEEVE)	ORING-SDP-0000051	1
10	IMPELLER	IMP-SDP100600	1
11	IMPELLER WASHER	IMPWHR-SDPRW00237	1
12	CAPSCREW 3/8" x 1"	FTRCP-HS8-0038C-0100-2	1
13	WEARING RING (CASE)	WRGRING-SDPW0190	1
14	PUMP CASE	CASE-SDPC00057-B	1
15	SUCTION HOUSING GASKET	GASKET-SDPC003829	1
16	SUCTION HOUSING	SUCHSG-SDPF00050-B	1
17	CAPSCREWS (SUCTION HOUSING TO CASE) 3/8" x 1 1/4"	FTRCP-5HZ-0038C-0125-2	3
18	SUCTION GASKET	GASKET-SDPC003848	1
19	STUD (HEAD TO CASE) 3/8" x 1 3/8"	FTRCP-5HZ-0038C-0138-2	2
20	HEX NUT (HEAD TO CASE) 3/8"	FTRNUT-2HZ-0038C-2	2
21	CAPSCREWS (HEAD TO CASE) 1/2" x 1 1/4"	FTRCP-5HZ-0038C-0100-2	4
22	CAPSCREWS (MOTOR SHAFT TO HEAD) 1/2" x 3/4"	FTRCP-SHZ-0038C-0075-2	4
23	1/4" NIPPLE 1/4" x 3 1/2"	NIPPLE-B-0025x350	1
24	1/4" FULL COUPLING	CLP-FCB-0025	1
25	1/4" 90° COMPRESSION FITTING	OMPFTG-R-MELL-038-025	1
26	1/4" PIPE PLUG	PF-PLUGSQ-SLD-B-0025	1
27	WEARING RING (HEAD)	WRGRING-SDPW0189	1