

SHIPCO PUMPS

MANUFACTURED BY

SHIPPENSBURG PUMP COMPANY INC.

P.O. Box 279 Shippensburg, Pa. 17257

PHONE 717 532-7321 / FAX 717 532-7704

WWW.SHIPCO.PUMPS.COM

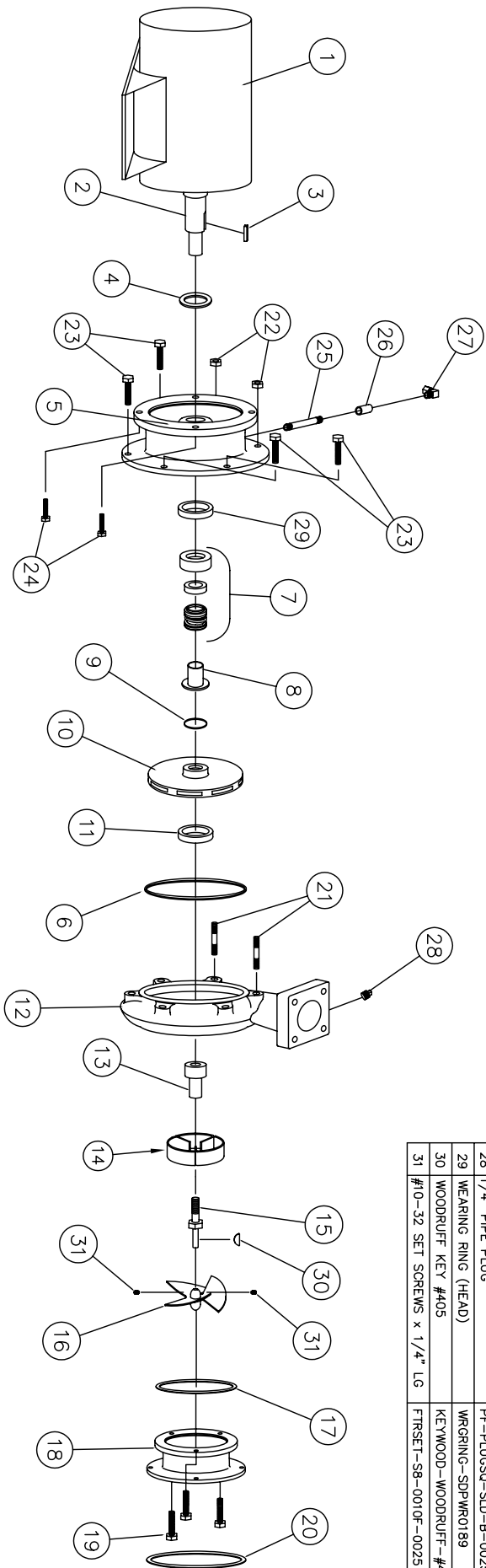
SHIPCO® IS A REGISTERED TRADEMARK OF SHIPPENSBURG PUMP CO., INC.

121 Model P Horiz End Suction JM Frame's 143, 145, 182, & 184

DRAWN BY J.BROOKENS DATE 9/04 REVISION .1

PARTS LIST # PL-82120

QUEB PART # 121PHJMS



PARTS LIST

NO.	DESCRIPTION	PART NO.	QTY.
1	MOTOR	JM FRAME	1
2	MOTOR SHAFT	KEYBAR-S8-019-OVR	1
3	KEY (MOTOR TO IMPELLER)	SLINGER-SDWS99998	1
4	WATER SLINGER	HEAD-SDPH400060-A	1
5	PUMP HEAD	ORNG-SDP000089	1
6	HEAD GASKET (O-RING)	MCHSEAL-SDPS00155	1
7	MECHANICAL SEAL 1 1/8"	SHTSLV-SDPFC00218	1
8	SHAFT SLEEVE	ORNG-SDPO 00051	1
9	"O" RING (SHAFT SLEEVE)	IMP-SDP100600	1
10	IMPELLER	WRGRNG-SDPWR0190	1
11	WEARING RING (CASE)	CASE-SDP000057-B	1
12	PUMP CASE	PROPSTM-SDPS00673	1
13	PROPELLER STEM	STRVANE-SDPS00122	1
14	STRAIGHTENING VANES	PROPSTM-SDPS00672	1
15	PROPELLER STEM BOLT	PROPELLER-SDPP00660-A	1
16	PROPELLER	GASKET-SDP603829	1
17	SUCTION HOUSING GASKET	SLCHSG-SDPF00050-B	1
18	SUCTION HOUSING	FTRCP-5HZ-0038C-0125-2	3
19	CAPSCREWS (SUCTION HOUSING TO CASE) <small>(HEAD TO CASE) 3/8 x 1 1/2</small>	GASKET-SDPG03848	1
20	SUCTION GASKET	FTRSTUD-ZZ-0038-0138-2	2
21	STUD <small>(HEAD TO CASE) 3/8 x 1 3/8</small>	FTRNUT-2HZ-0038C-2	2
22	HEX NUT <small>(HEAD TO CASE) 3/8 x 1 3/8</small>	FTRCP-5HZ-0038C-0100-2	4
23	CAPSCREWS <small>(HEAD TO CASE) 3/8 x 1 1/4</small>	FTRCP-5HZ-0038C-0075-2	4
24	CAPSCREWS <small>(MOTOR TO HEAD) 3/8 x 3/4</small>	NIPPLE-B-0025x350	1
25	1/4" NIPPLE <small>1/4 x 3 1/2</small>	CLP-FCB-0025	1
26	1/4" FULL COUPLING	CPMFTG-R-MELL-038-025	1
27	1/4" 90° COMPRESSION RING	PF-PLUGSQ-SLD-B-0025	1
28	1/4" PIPE PLUG	WRGRNG-SDPWR0189	1
29	WEARING RING (HEAD)	KEYWOOD-WOODRUFF-#405	1
30	WOODRUFF KEY #405	FTRSET-S8-0010F-0025	2
31	#10-32 SET SCREWS x 1/4" LG		