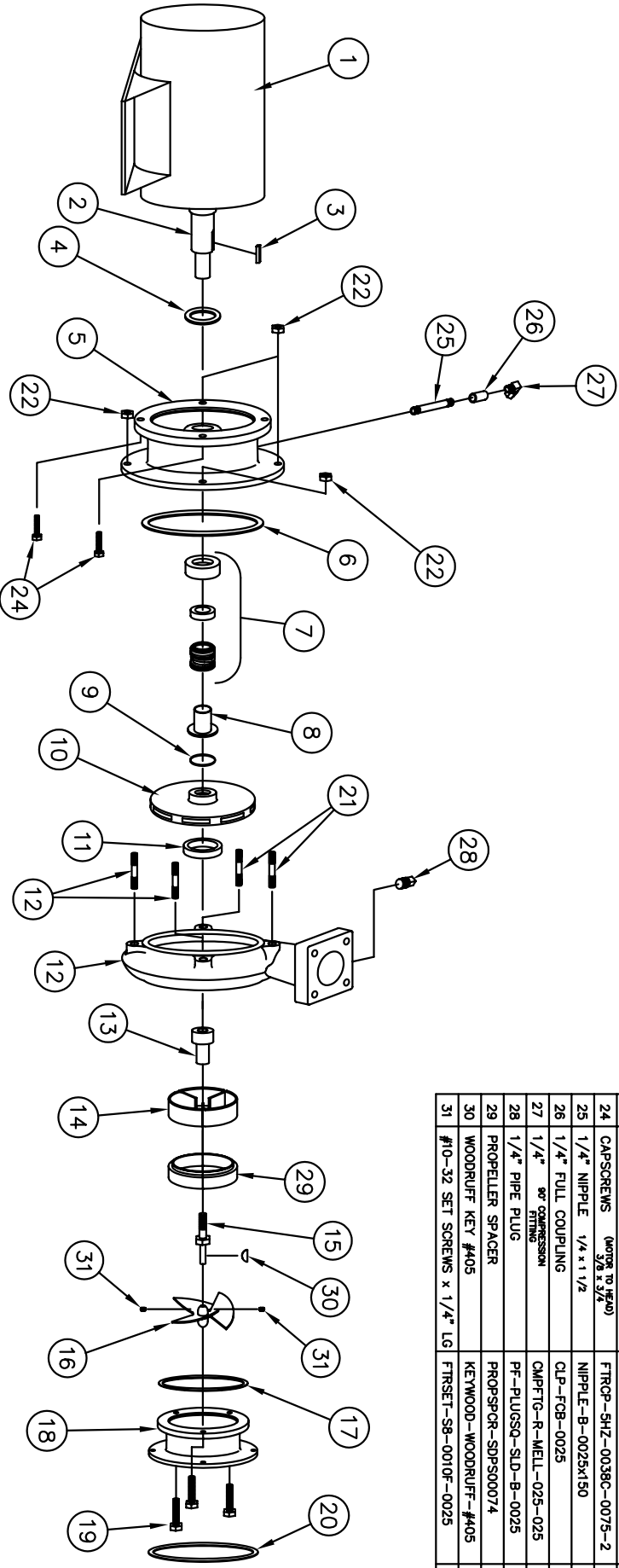


SHIPCO PUMPS

MANUFACTURED BY
 SHIPPENSBURG PUMP COMPANY INC.
 P.O. Box 279 Shippenburg, Pa. 17257
 PHONE 717 532-7321 / FAX 717 532-7704
 WWW.SHIPCO PUMPS.COM
 SHIPCO® IS A REGISTERED TRADEMARK OF SHIPPENSBURG PUMP CO., INC.

127 Model P Horiz End Suction JM Frames 213 & 215

DRAWN BY	DATE	REVISION
M.LINEAWEAVER	9/10	.0
PARTS LIST #	PL-82722	
QUOTE PART #	127PHJML	



PARTS LIST			
NO.	DESCRIPTION	PART NO.	QTY.
1	MOTOR	JM FRAME	1
2	MOTOR SHAFT		1
3	KEY (MOTOR TO IMPELLER)	KEYBAR-S8-019-OVR	1
4	WATER SLINGER	SLINGER-SDWS99998	1
5	PUMP HEAD	HEAD-SDPH00133-1	1
6	HEAD GASKET	GASKET-SDPG03828	1
7	MECHANICAL SEAL 1 1/8"	MCHSEAL-SDPS00155	1
8	SHAFT SLEEVE	SHTSLEEVE-SDPC00218	1
9	*0" RING (SHAFT SLEEVE)	ORING-SDP000051	1
10	IMPELLER	IMP-SDPI00145	1
11	WEARING RING	WRGRING-SDPWR00033	1
12	PUMP CASE	CASE-SDPC00047	1
13	PROPELLER STEM	PROPSTM-SDPS00676	1
14	STRAIGHTENING VANES	STRVANE-SDPS00122	1
15	PROPELLER STEM BOLT	PROPSTM-SDPS00677	1
16	PROPELLER	PROPELR-SDPP00660-A	1
17	SUCTION HOUSING ORING	ORING-SDP000046	1
18	SUCTION HOUSING	SUCHSG-SDPF00050-B	1
19	CAPSCREWS (SUCTION HOUSING to CASE)	FTRCP-SHZ-0038C-0100-2	3
20	SUCTION GASKET	FLG-ASA-SP15-GKT-0300	1
21	STUD (HEAD TO CASE) (HEAD TO CASE)	FTRSTUD-2P-0038C-0138-2	4
22	HEX NUT (HEAD TO CASE) (HEAD TO CASE)	FTRNUT-SHZ-0038C-2	4
23	-	-	-
24	CAPSCREWS (MOTOR TO HEAD) 3/8 x 3/4	FTRCP-SHZ-0038C-0075-2	4
25	1/4" NIPPLE 1/4 x 1 1/2	NIPPLE-B-0025x150	1
26	1/4" FULL COUPLING	CLP-FCB-0025	1
27	1/4" 90° COMPRESSION FITTING	CMPTG-R-MELL-025-025	1
28	1/4" PIPE PLUG	PF-PLUGSQ-SLD-B-0025	1
29	PROPELLER SPACER	PROPSQR-SDPS00074	1
30	WOODRUFF KEY #405	KEYWOOD-WOODRUFF-#405	1
31	#10-32 SET SCREWS x 1/4" LG	FTRSET-S8-0010F-0025	2