

SHIPCO PUMPS

MANUFACTURED BY

SHIPPENSBURG PUMP COMPANY INC.

P.O. Box 279 Shippenburg, Pa. 17257

PHONE 717 532-7321 / FAX 717 532-7704

WWW.SHIPCO PUMPS.COM

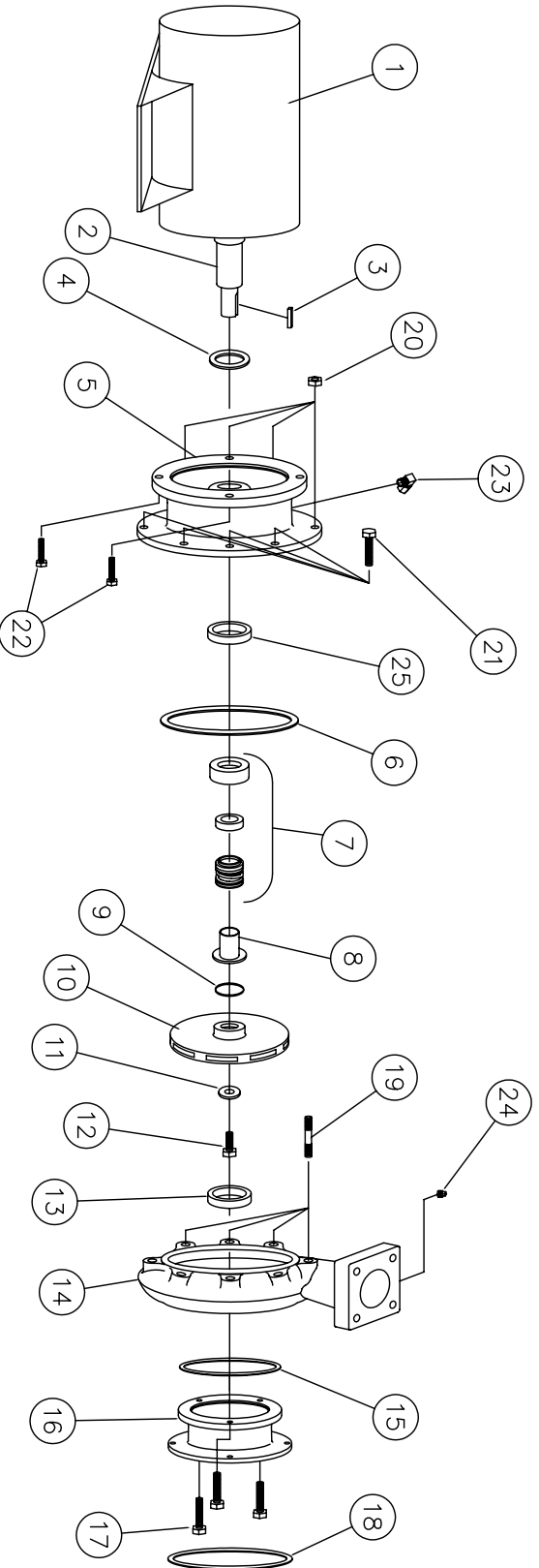
SHIPCO® IS A REGISTERED TRADEMARK OF SHIPPENSBURG PUMP CO., INC.

131 Model D Horiz End Suction JM Frames 213 & 215 3500 RPM

DRAWN BY M. REED DATE 9/04 REVISION .0

PARTS LIST # PL-83117

QUEB PART # 131DHJM(35)L



PARTS LIST			
NO.	DESCRIPTION	PART NO.	QTY.
1	MOTOR	JM FRAME	1
2	MOTOR SHAFT		1
3	KEY (MOTOR TO IMPELLER)	KEYBAR-S8-019-OVR	1
4	WATER SLINGER	SLINGER-SDWS99998	1
5	PUMP HEAD	HEAD-SDPH00063-1	1
6	HEAD GASKET (O-RING)	ORING-SDP0000088	1
7	MECHANICAL SEAL 1 1/8"	MCHSEAL-SDP000155	1
8	SHAFT SLEEVE	SHTSLVE-SDP000218	1
9	"O" RING (SHAFT SLEEVE)	ORING-SDP0000051	1
10	IMPELLER	IMP-SDPI00019-A	1
11	IMPELLER WASHER	IMP-WHR-SDPRW00137	1
12	CAPSCREW	FTRCP-HS8-0050C-0100-2	1
13	WEARING RING	WRGRING-SDPWR00016	1
14	PUMP CASE	CASE-SDPC00018	1
15	SUCTION HOUSING GASKET	GASKET-SDPG03836	1
16	SUCTION HOUSING	SUCHSG-SDPF00025	1
17	CAPSCREWS (SUCTION HOUSING TO CASE)	FTRCP-SHZ-0038C-0125-2	3
18	SUCTION GASKET	GASKET-SDPG03848	1
19	STUD	FTRSTUD-2P-0038C-0138-2	4
20	HEX NUT	FTRNUT-2HZ-0038C-2	4
21	CAPSCREWS (HEAD TO CASE)	FTRCP-SHZ-0038C-0100-2	4
22	CAPSCREWS (MOTOR TO HEAD)	FTRCP-SHZ-0038C-0075-2	4
23	1/4" 90° COMPRESSION FITTING	CPMFTG-R-MELL-038-025	1
24	1/4" PIPE PLUG	PF-PLUGSQ-SLD-B-0025	1
25	WEARING RING	WRGRING-SDPWR00131	1