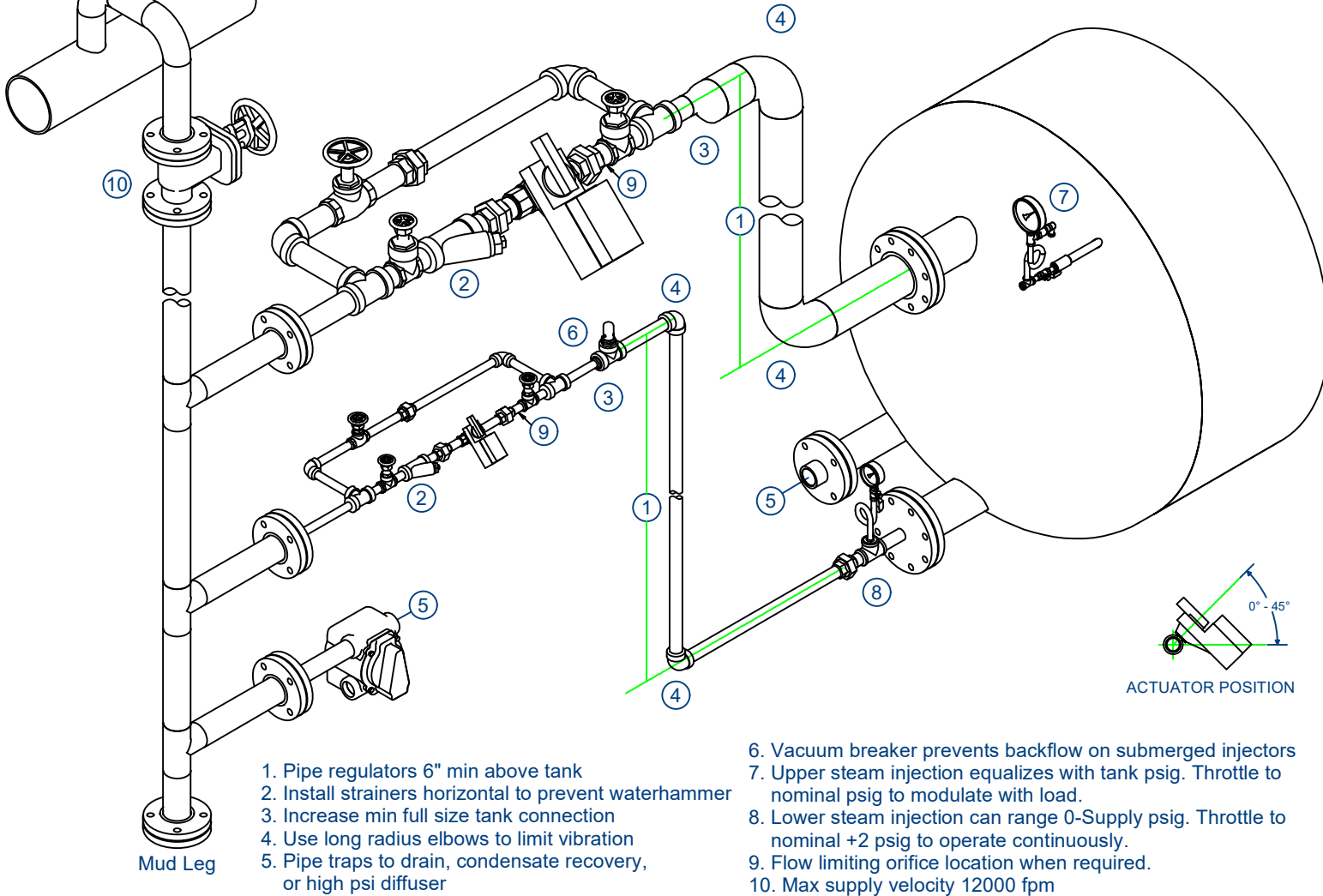


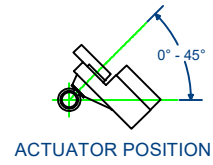
Steam Main

RECOMMENDED REGULATOR PIPING BELIMO STEAM VALVE



- 1. Pipe regulators 6" min above tank
- 2. Install strainers horizontal to prevent waterhammer
- 3. Increase min full size tank connection
- 4. Use long radius elbows to limit vibration
- 5. Pipe traps to drain, condensate recovery, or high psi diffuser

- 6. Vacuum breaker prevents backflow on submerged injectors
- 7. Upper steam injection equalizes with tank psig. Throttle to nominal psig to modulate with load.
- 8. Lower steam injection can range 0-Supply psig. Throttle to nominal +2 psig to operate continuously.
- 9. Flow limiting orifice location when required.
- 10. Max supply velocity 12000 fpm



SHIPPENSBURG PUMP CO., INC.
 P.O. Box 279 Shippensburg, PA 17257
 (717) 532-7321 • www.shipcopumps.com
 SHIPCO® is a registered trademark of Shippensburg Pump Co., Inc.

Belimo Steam Regulator (2 Inlets)			
SECTION	DRAWING NO.	REV.	DATE
	REG-PIPE-BELIMO-2		COPYRIGHT © 2024.