

 THREADED ELBOW

 THREADED TEE

 CONCENTRIC REDUCER
(IF NEEDED)

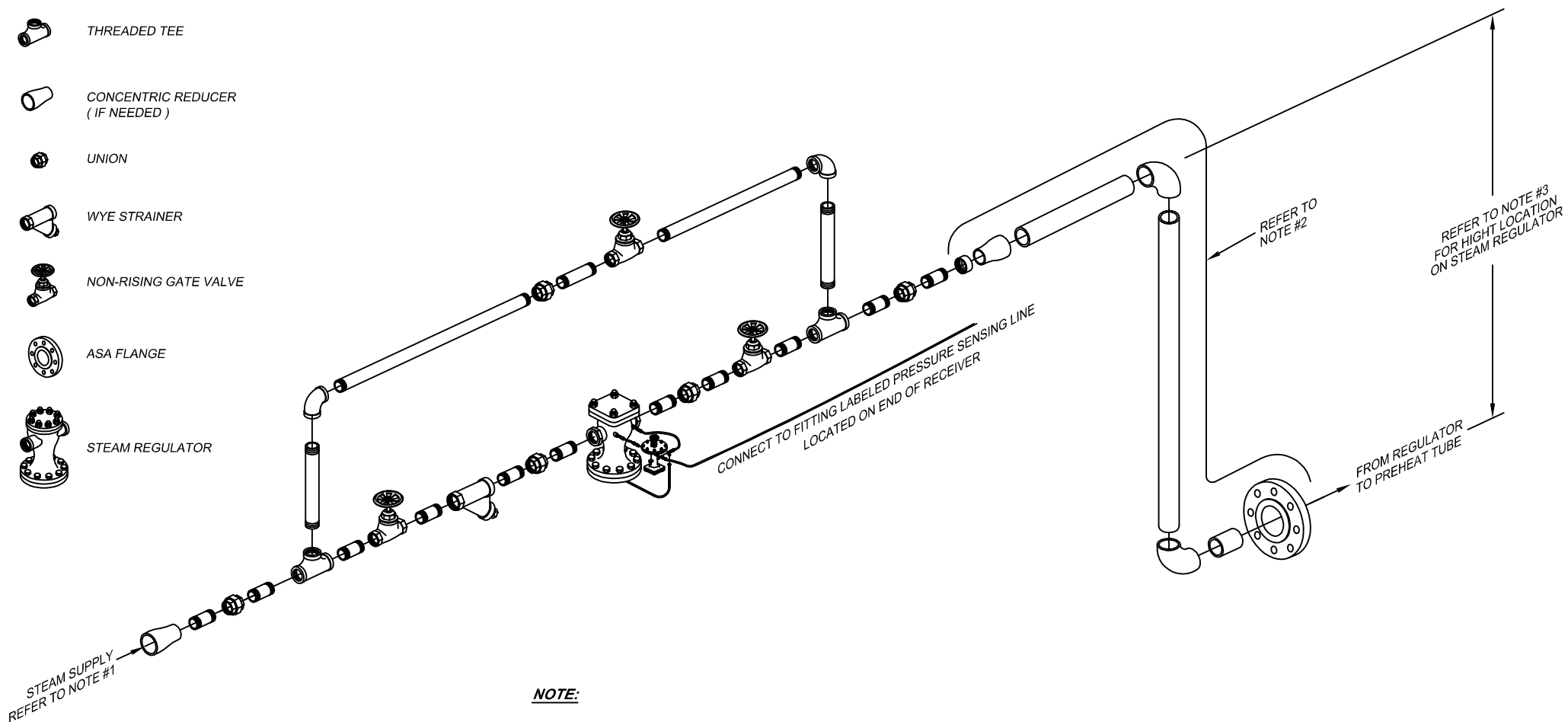
 UNION

 WYE STRAINER

 NON-RISING GATE VALVE

 ASA FLANGE

 STEAM REGULATOR



NOTE:

1. STEAM SUPPLY LINE FEEDING REGULATOR TO BE SIZED USING PROPER PIPING INSTALLATION PRACTICE.
2. PIPING BETWEEN REGULATOR AND PREHEAT TUBE SHOULD BE INSULATED.
3. STEAM REGULATOR MUST BE POSITIONED ABOVE THE OVERFLOW, SO AS; NOT TO FLOOD AND DAMAGE THE STEAM REGULATING VALVE.
4. PLEASE READ THE INSTALLATION, OPERATION & MAINTENANCE MANUAL SUPPLIED IN THE SHIPCO I.O.M. BEFORE PIPING OR STARTING THE UNIT.

SHIPCO®
SPUMPS

MANUFACTURED BY

SHIPPENSBURG PUMP COMPANY INC.

P.O. Box 279 Shippensburg, Pa. 17257

PHONE 717 532-7321 / FAX 717 532-7704

WWW.SHIPCOPUMPS.COM

SHIPCO® IS A REGISTERED TRADEMARK OF SHIPPENSBURG PUMP CO., INC.

*Piping Diagram for Pressurized
Deaerator Units
SPENCE Threaded Steam Regulator and
Pressure Reducing Pilot*

DRAWN BY	DATE	REVISION
J. ROBINSON	10/16	0
PRINT #	SPENCE ED5	