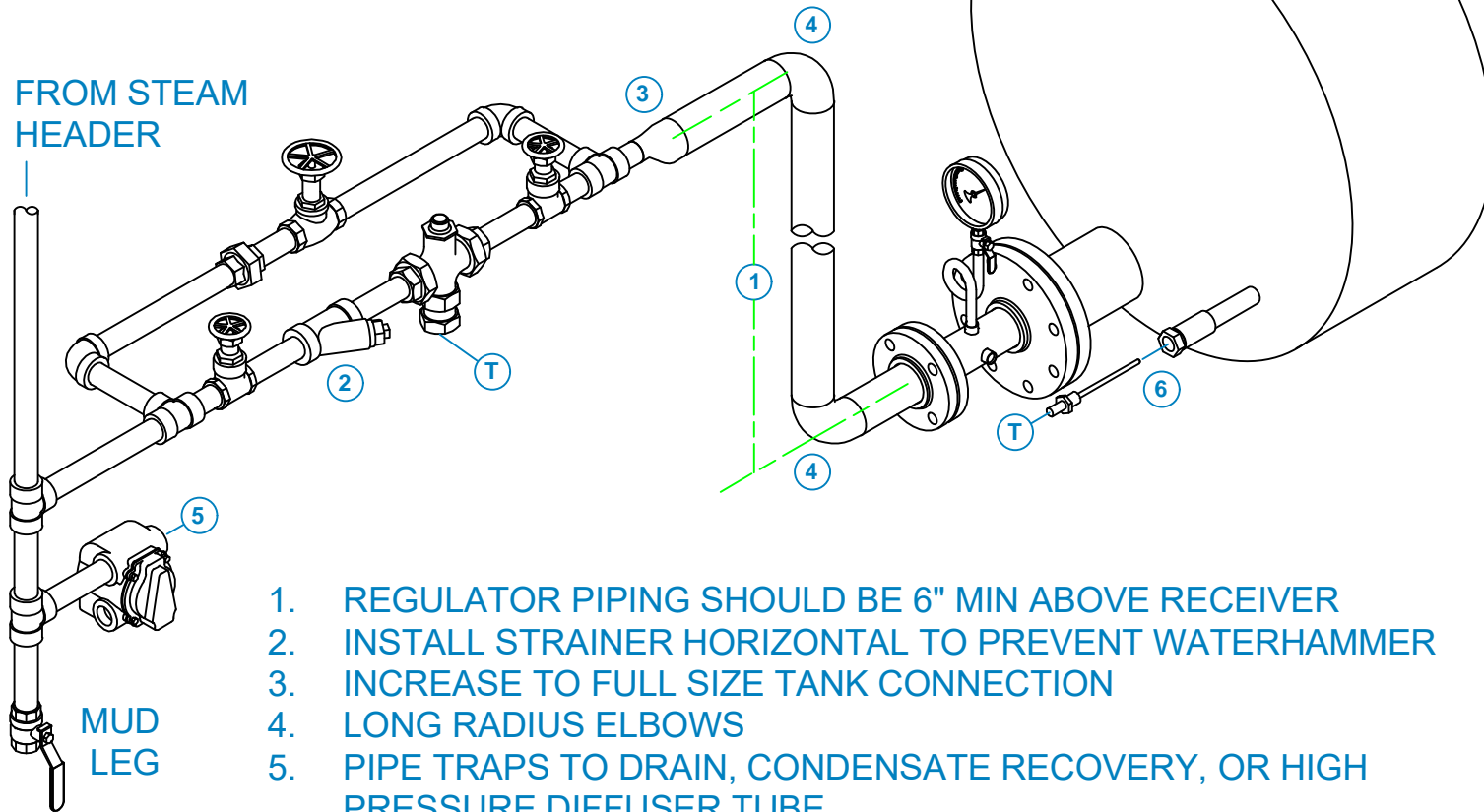


SUGGESTED REGULATOR PIPING

ATMOSPHERIC, VENTURI OR LOW PRESSURE STEAM

T. CONNECT TEMPERATURE SENSING LINE FROM T-T



1. REGULATOR PIPING SHOULD BE 6" MIN ABOVE RECEIVER
2. INSTALL STRAINER HORIZONTAL TO PREVENT WATERHAMMER
3. INCREASE TO FULL SIZE TANK CONNECTION
4. LONG RADIUS ELBOWS
5. PIPE TRAPS TO DRAIN, CONDENSATE RECOVERY, OR HIGH PRESSURE DIFFUSER TUBE
6. PACK WELL WITH THERMAL GREASE



SHIPPENSBURG PUMP CO., INC.

P.O. Box 279 Shippensburg, PA 17257
(717) 532-7321 • www.shipcopumps.com

SHIPCO® is a registered trademark of Shippensburg Pump Co., Inc.

Sterlco Type 150G Regulator

SECTION	DRAWING NO.	REV.	DATE
	REG-PIPE-150G		